

Anti-HIF2A/EPAS1 Antibody (R3W10)

Summary

Catalog No.	RHJ47001
Clone ID	R3W10
Host species	Mouse
Tested applications	ELISA: 1:10000, FCM: 1:200-1:400, IF: 1:200-1:1000, IHC: 1:200-1:1000
Species reactivity	Human
Form	Liquid
Storage buffer	0.01M PBS, pH 7.4, 0.05% Sodium Azide.
Concentration	1 mg/ml
Purity	>95% as determined by SDS-PAGE.
Clonality	Monoclonal
Isotype	IgG1
Applications	ELISA, FCM, IF, IHC
Target	Basic-helix-loop-helix-PAS protein MOP2, bHLHe73, HIF-2-alpha, Member of PAS protein 2, PAS domain-containing protein 2, HIF2A, HLF, EPAS1, Endothelial PAS domain-containing protein 1, EPAS-1, HIF-1-alpha-like factor, Hypoxia-inducible factor 2-alpha, MOP2, HIF2-alpha, BHLHE73, PASD2, Class E basic helix-loop-helix protein 73
Purification	Protein A/G purified from cell culture supernatant.
Endotoxin level	Please contact with the lab for this information.
Accession	Q99814

Stability and Storage

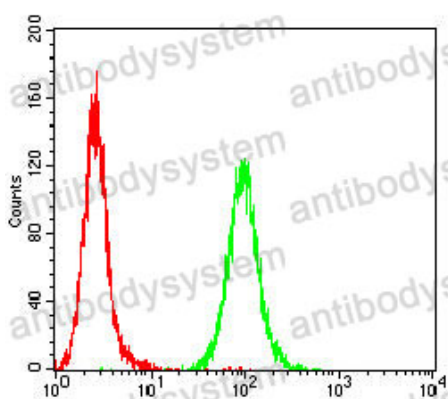
Use a manual defrost freezer and avoid repeated freeze-thaw cycles.

Store at 4°C short term (1-2 weeks). Store at -20°C 12 months. Store at -80°C long term.

Note

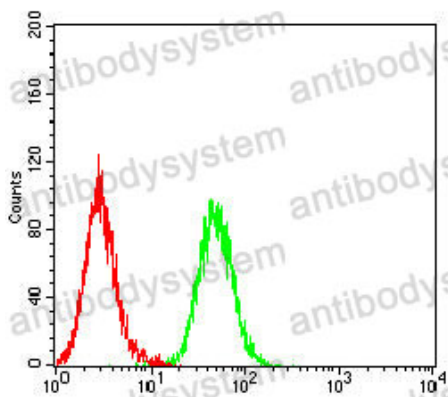
For research use only.

Data Image



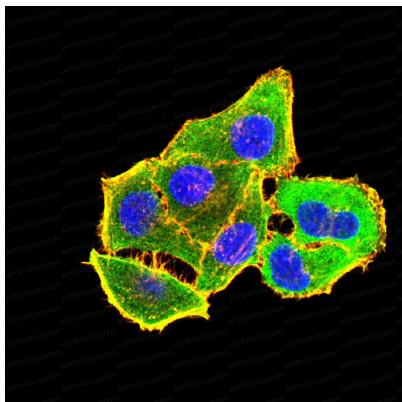
Flow Cytometry

Flow cytometric analysis of HeLa cells using HIF2a mouse mAb (green) and negative control (red).



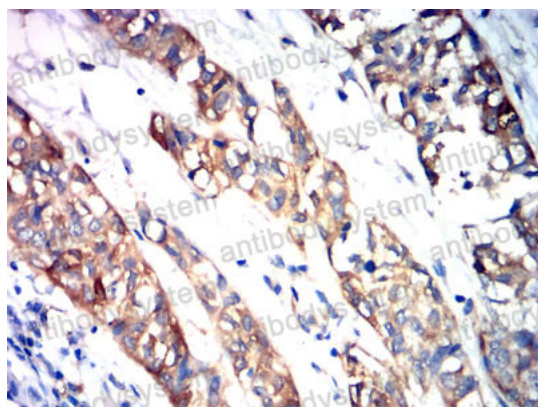
Flow Cytometry

Flow cytometric analysis of HepG2 cells using HIF2a mouse mAb (green) and negative control (red).



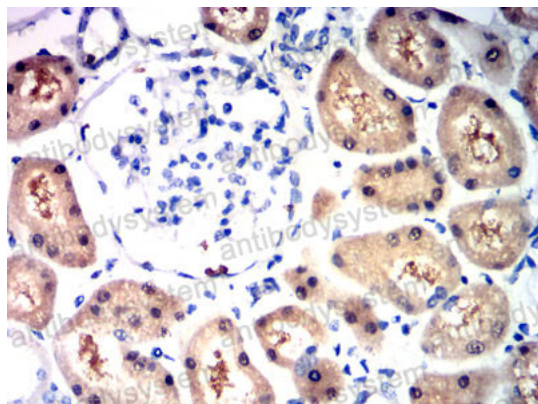
Immunofluorescence

Immunofluorescence analysis of HeLa cells using HIF2a mouse mAb (green). Blue: DRAQ5 fluorescent DNA dye. Red: Actin filaments have been labeled with Alexa Fluor- 555 phalloidin.



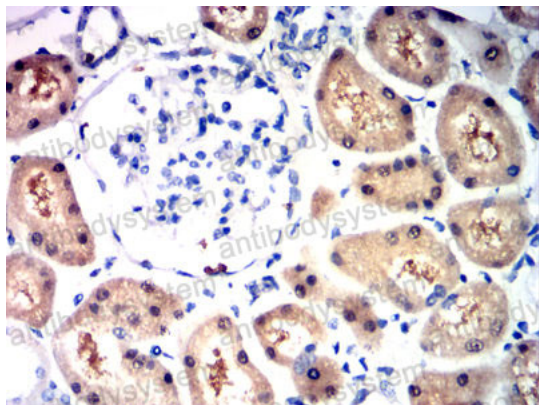
Immunohistochemical

Immunohistochemical analysis of paraffin-embedded human bladder cancer tissues using HIF2a mouse mAb with DAB staining.



Immunohistochemical

Immunohistochemical analysis of paraffin-embedded human kidney tissues using HIF2a mouse mAb with DAB staining.



Immunohistochemical

Immunohistochemical analysis of paraffin-embedded human kidney tissues using HIF2a mouse mAb with DAB staining.