

# Anti-CD158d/KIR2DL4 Antibody (R3W06)

## Summary

---

<b>Catalog No.</b>	RHJ46001
<b>Clone ID</b>	R3W06
<b>Host species</b>	Mouse
<b>Tested applications</b>	ELISA: 1:10000, FCM: 1:200-1:400
<b>Species reactivity</b>	Human
<b>Form</b>	Liquid
<b>Storage buffer</b>	0.01M PBS, pH 7.4, 0.05% Sodium Azide.
<b>Concentration</b>	1 mg/ml
<b>Purity</b>	>95% as determined by SDS-PAGE.
<b>Clonality</b>	Monoclonal
<b>Isotype</b>	IgG1
<b>Applications</b>	ELISA, FCM
<b>Target</b>	KIR2DL4, KIR-103AS, KIR103AS, CD158d, CD158 antigen-like family member D, CD158D, MHC class I NK cell receptor KIR103AS, Killer cell immunoglobulin-like receptor 2DL4, G9P, Killer cell inhibitory receptor 103AS
<b>Purification</b>	Protein A/G purified from cell culture supernatant.
<b>Endotoxin level</b>	Please contact with the lab for this information.
<b>Accession</b>	Q99706

**Stability and Storage**

Use a manual defrost freezer and avoid repeated freeze-thaw cycles.

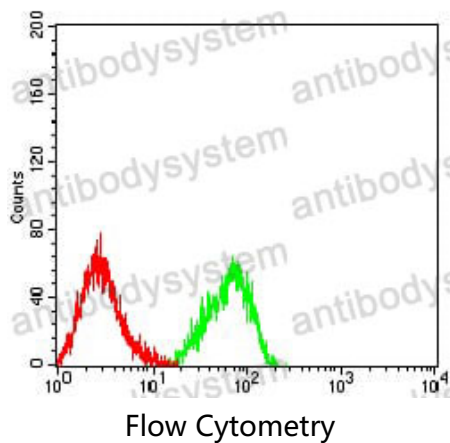
Store at 4°C short term (1-2 weeks). Store at -20°C 12 months. Store at -80°C long term.

**Note**

For research use only.

**Data Image**

---



Flow cytometric analysis of HL-60 cells using CD158D mouse mAb (green) and negative control (red).