

Anti-CD158d/KIR2DL4 Antibody (R3W05)

Summary

Catalog No.	RHJ46002
Clone ID	R3W05
Host species	Mouse
Tested applications	ELISA: 1:10000, FCM: 1:200-1:400
Species reactivity	Human
Form	Liquid
Storage buffer	0.01M PBS, pH 7.4, 0.05% Sodium Azide.
Concentration	1 mg/ml
Purity	>95% as determined by SDS-PAGE.
Clonality	Monoclonal
Isotype	IgG1
Applications	ELISA, FCM
Target	KIR2DL4, KIR-103AS, KIR103AS, CD158d, CD158 antigen-like family member D, CD158D, MHC class I NK cell receptor KIR103AS, Killer cell immunoglobulin-like receptor 2DL4, G9P, Killer cell inhibitory receptor 103AS
Purification	Protein A/G purified from cell culture supernatant.
Endotoxin level	Please contact with the lab for this information.
Accession	Q99706

Recombinant Proteins & Antibodies

Stability and Storage

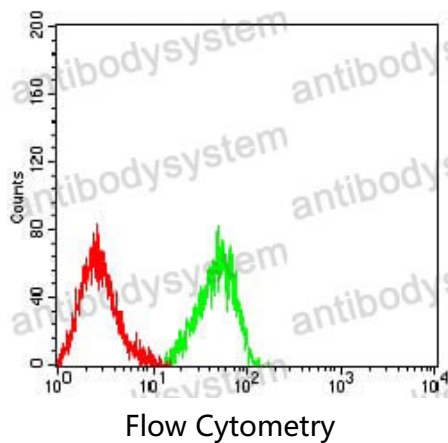
Use a manual defrost freezer and avoid repeated freeze-thaw cycles.

Store at 4°C short term (1-2 weeks). Store at -20°C 12 months. Store at -80°C long term.

Note

For research use only.

Data Image



Flow cytometric analysis of HL-60 cells using CD158D mouse mAb (green) and negative control (red).