

Anti-MAP3K5 Antibody (R3W04)

Summary

Catalog No.	RHJ45802
Clone ID	R3W04
Host species	Mouse
Tested applications	ELISA: 1:10000, FCM: 1:200-1:400, IF: 1:200-1:1000, IHC: 1:200-1:1000
Species reactivity	Human
Form	Liquid
Storage buffer	0.01M PBS, pH 7.4, 0.05% Sodium Azide.
Concentration	1 mg/ml
Purity	>95% as determined by SDS-PAGE.
Clonality	Monoclonal
Isotype	IgG1
Applications	ELISA, FCM, IF, IHC
Target	ASK1, MAPK/ERK kinase kinase 5, MEKK5, MAPKKK5, MEKK 5, Apoptosis signal-regulating kinase 1, ASK-1, Mitogen-activated protein kinase kinase kinase 5, MAP3K5, MEK kinase 5
Purification	Protein A/G purified from cell culture supernatant.
Endotoxin level	Please contact with the lab for this information.
Accession	Q99683

Stability and Storage

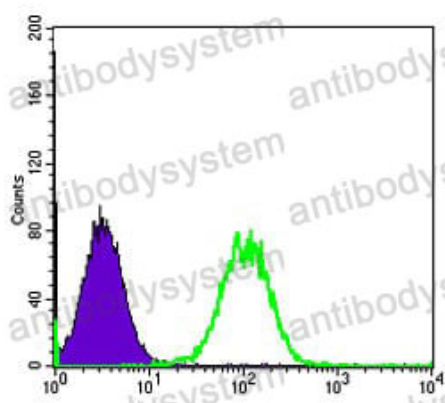
Use a manual defrost freezer and avoid repeated freeze-thaw cycles.

Store at 4°C short term (1-2 weeks). Store at -20°C 12 months. Store at -80°C long term.

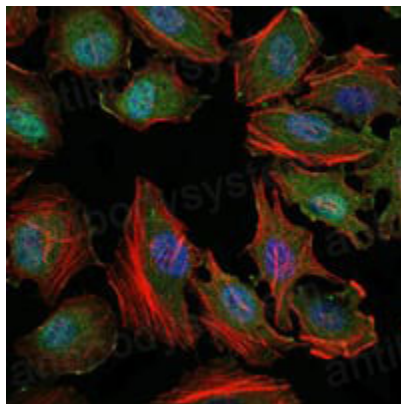
Note

For research use only.

Data Image



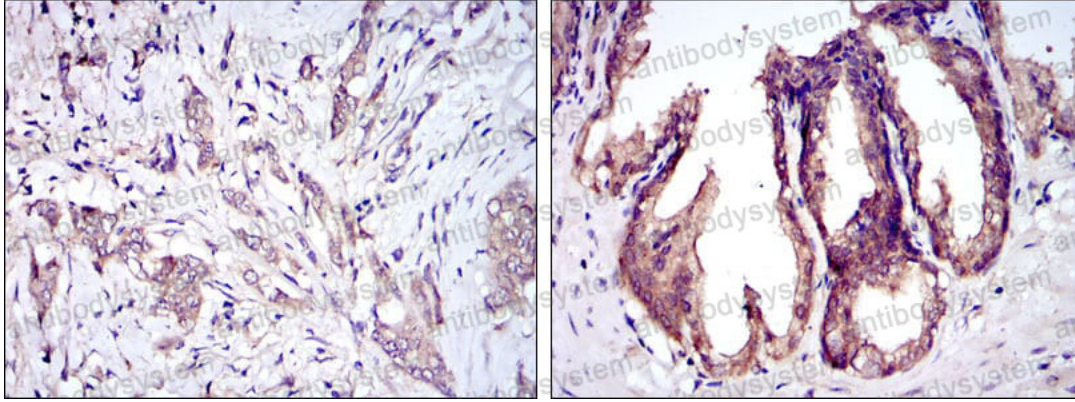
Flow Cytometry



Immunofluorescence

Flow cytometric analysis of HeLa cells using MAP3K5 mouse mAb (green) and negative control (purple).

Immunofluorescence analysis of HeLa cells using MAP3K5 mouse mAb (green). Blue: DRAQ5 fluorescent DNA dye. Red: Actin filaments have been labeled with Alexa Fluor-555 phalloidin.



Immunohistochemical analysis of paraffin-embedded human breast cancer tissues (left) and prostate tissues (right) using MAP3K5 mouse mAb with DAB staining.

Immunohistochemical