

Anti-CDX2 Antibody (R3W03)

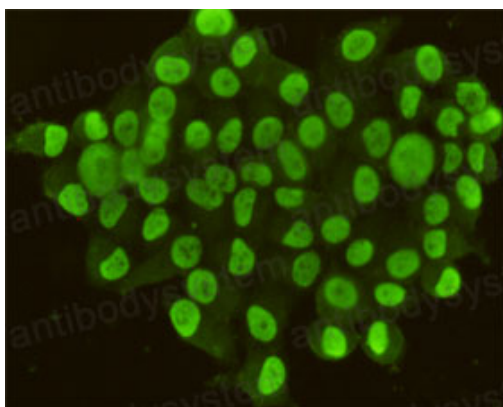
Summary

Catalog No.	RHJ45305
Clone ID	R3W03
Host species	Mouse
Tested applications	IF: 1:50-1:200, IP: 1:20, WB: 1:500-1:1000
Species reactivity	Human, Monkey
Form	Liquid
Storage buffer	0.01M PBS, pH 7.4, 0.5% BSA, 0.05% Sodium Azide and 50% Glycerol.
Concentration	1 mg/ml
Purity	>95% as determined by SDS-PAGE.
Clonality	Monoclonal
Isotype	IgG1
Applications	IF, IP, WB
Target	Homeobox protein CDX-2, CDX-3, CDX3, CDX2, Caudal-type homeobox protein 2
Purification	Protein A/G purified from cell culture supernatant.
Endotoxin level	Please contact with the lab for this information.
Accession	Q99626
Stability and Storage	Use a manual defrost freezer and avoid repeated freeze-thaw cycles. Store at 4°C short term (1-2 weeks). Store at -20°C 12 months. Store at -80°C long term.

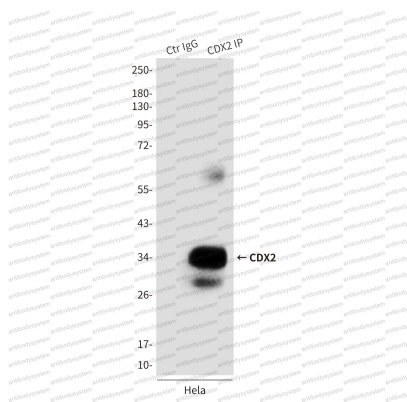
Note

For research use only.

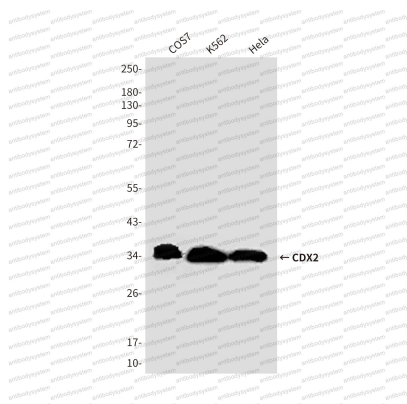
Data Image

**Immunofluorescence**

Immunocytochemistry analysis of CDX2 in HeLa using CDX2 antibody.

**Immunoprecipitation**

Immunoprecipitation analysis of CDX2 in HeLa lysates using CDX2 antibody.



Western blot

Western blot analysis of CDX2 in HeLa, COS7 and K562 lysates using CDX2 antibody.