

Anti-CDX2 Antibody (R3W02)

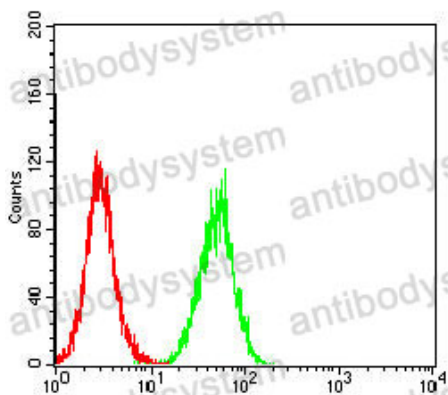
Summary

Catalog No.	RHJ45304
Clone ID	R3W02
Host species	Mouse
Tested applications	ELISA: 1:10000, FCM: 1:200-1:400, IHC: 1:200-1:1000
Species reactivity	Human
Form	Liquid
Storage buffer	0.01M PBS, pH 7.4, 0.05% Sodium Azide.
Concentration	1 mg/ml
Purity	>95% as determined by SDS-PAGE.
Clonality	Monoclonal
Isotype	IgG1
Applications	ELISA, FCM, IHC
Target	Homeobox protein CDX-2, CDX-3, CDX3, CDX2, Caudal-type homeobox protein 2
Purification	Protein A/G purified from cell culture supernatant.
Endotoxin level	Please contact with the lab for this information.
Accession	Q99626
Stability and Storage	Use a manual defrost freezer and avoid repeated freeze-thaw cycles. Store at 4°C short term (1-2 weeks). Store at -20°C 12 months. Store at -80°C long term.

Note

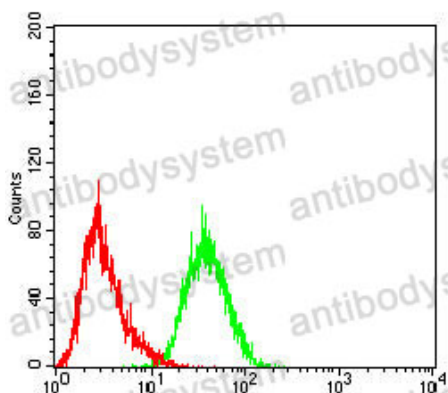
For research use only.

Data Image



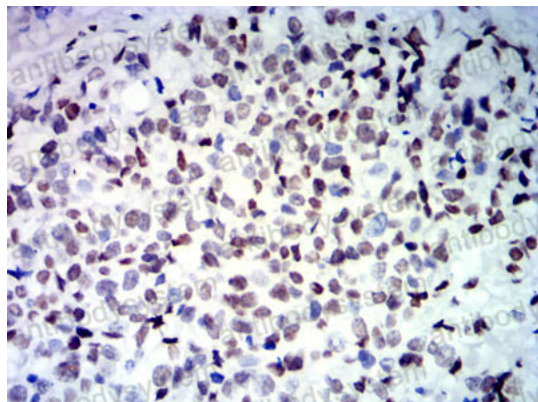
Flow Cytometry

Flow cytometric analysis of SK-OV-3 cells using CDX2 mouse mAb (green) and negative control (red).



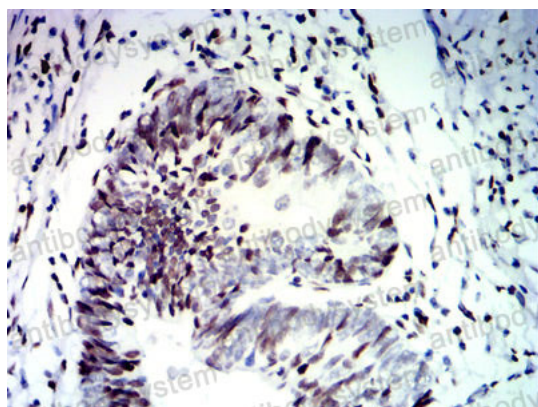
Flow Cytometry

Flow cytometric analysis of Jurkat cells using CDX2 mouse mAb (green) and negative control (red).



Immunohistochemical

Immunohistochemical analysis of paraffin-embedded human bladder Cancer tissues using CDX2 mouse mAb with DAB staining.



Immunohistochemical

Immunohistochemical analysis of paraffin-embedded human rectal cancer tissues using CDX2 mouse mAb with DAB staining.