

# Anti-SIRT1 Antibody (R3V82)

## Summary

---

<b>Catalog No.</b>	RHJ38701
<b>Clone ID</b>	R3V82
<b>Host species</b>	Mouse
<b>Tested applications</b>	FCM: 1:200-1:400, IF: 1:200-1:1000, IHC: 1:200-1:1000, WB: 1:500-1:2000
<b>Species reactivity</b>	Human, Mouse, Rat, Rabbit, Monkey
<b>Form</b>	Liquid
<b>Storage buffer</b>	0.01M PBS, pH 7.4, 0.05% Sodium Azide.
<b>Concentration</b>	1 mg/ml
<b>Purity</b>	>95% as determined by SDS-PAGE.
<b>Clonality</b>	Monoclonal
<b>Isotype</b>	IgG1
<b>Applications</b>	FCM, IF, IHC, WB
<b>Target</b>	NAD-dependent protein deacylase sirtuin-1, hSIR2, NAD-dependent protein deacetylase sirtuin-1, SIR2-like protein 1, 75SirT1, SIR2L1, Regulatory protein SIR2 homolog 1, SIRT1, hSIRT1
<b>Purification</b>	Protein A/G purified from cell culture supernatant.
<b>Endotoxin level</b>	Please contact with the lab for this information.
<b>Accession</b>	Q96EB6

**Stability and Storage**

Use a manual defrost freezer and avoid repeated freeze-thaw cycles.

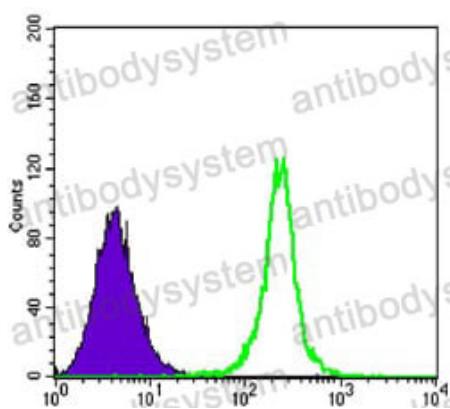
Store at 4°C short term (1-2 weeks). Store at -20°C 12 months. Store at -80°C long term.

**Note**

For research use only.

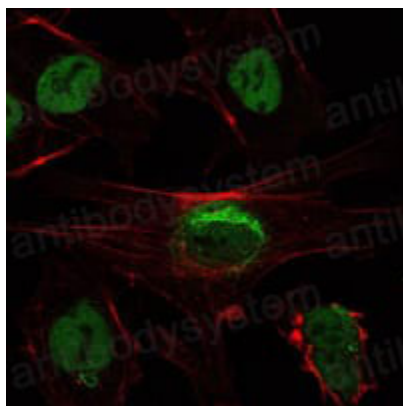
**Data Image**

---



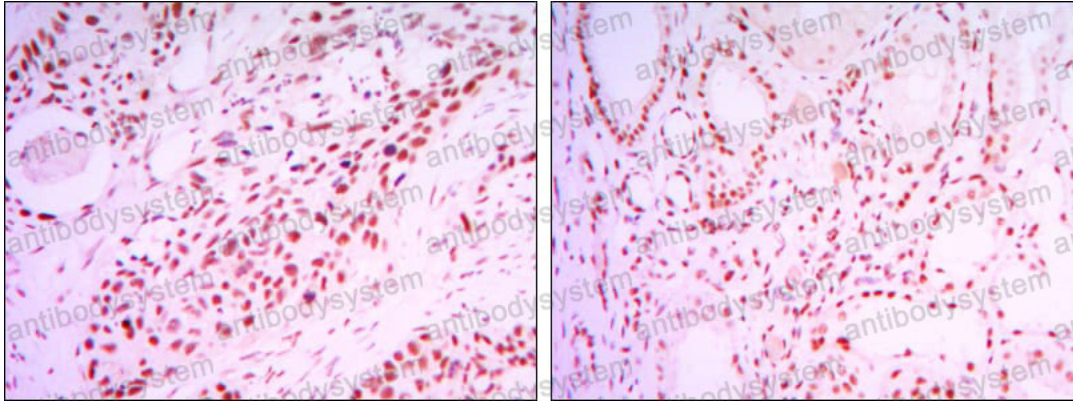
Flow Cytometry

Flow cytometric analysis of K562 cells using SIRT1 mouse mAb (green) and negative control (purple).



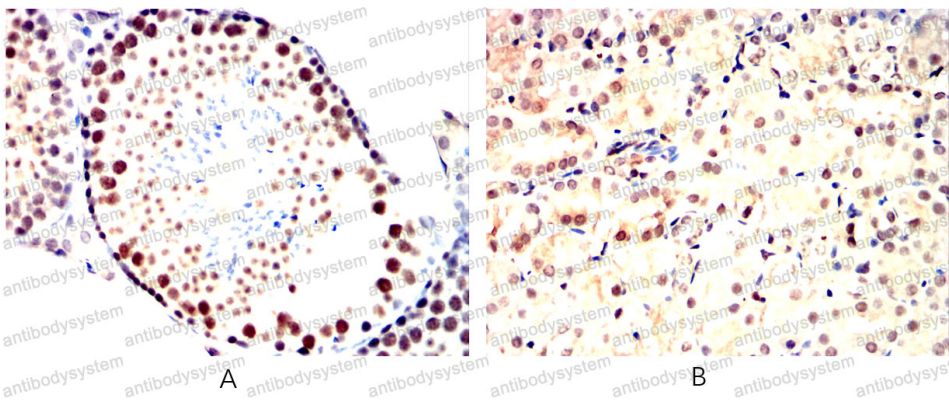
Immunofluorescence

Immunofluorescence analysis of NTERA-2 cells using SIRT1 mouse mAb (green). Red: Actin filaments have been labeled with Alexa Fluor-555 phalloidin.



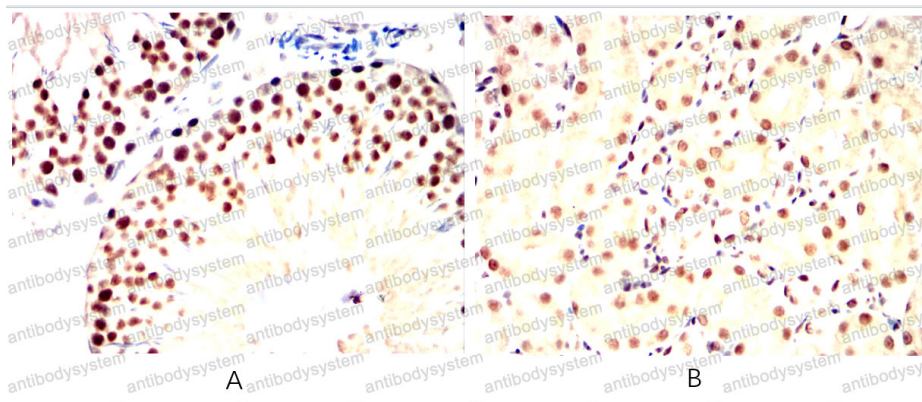
Immunohistochemical

Immunohistochemical analysis of paraffin-embedded human lung cancer tissues (left) and kidney cancer tissues (right) using SIRT1 mouse mAb with DAB staining.



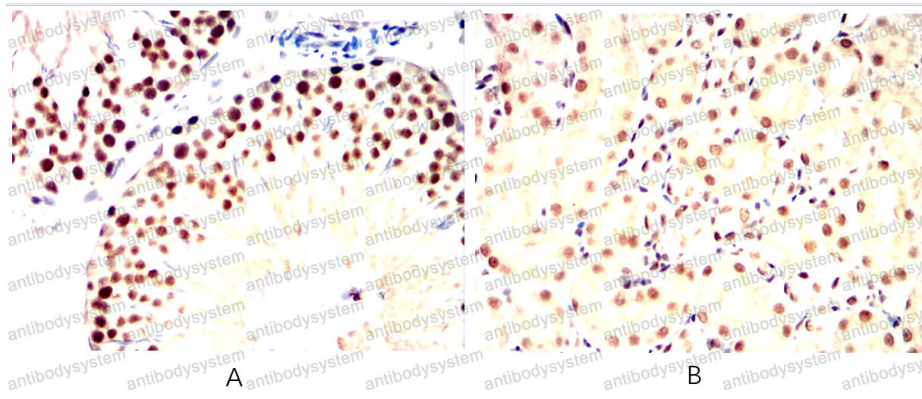
Immunohistochemical

Immunohistochemical analysis of paraffin-embedded Mouse testis(A)Mouse kidney(B) using SIRT1 mouse mAb with DAB staining.



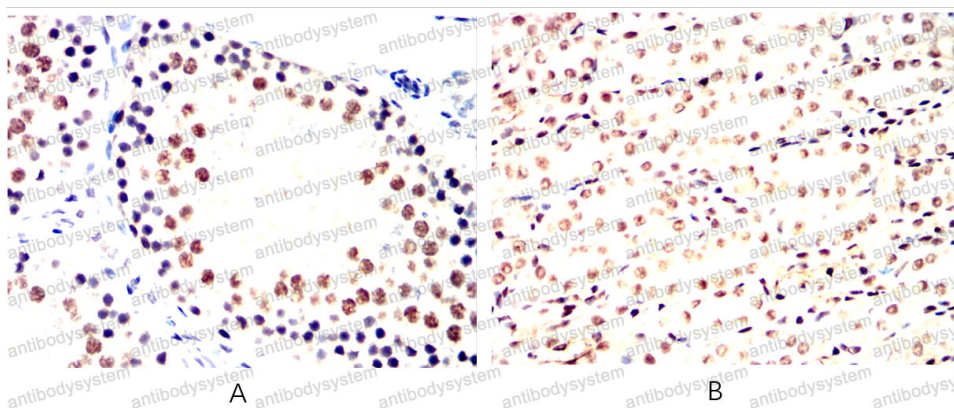
Immunohistochemical

Immunohistochemical analysis of paraffin-embedded Rat spleen(A)Rat liver(B) using SIRT1 mouse mAb with DAB staining.



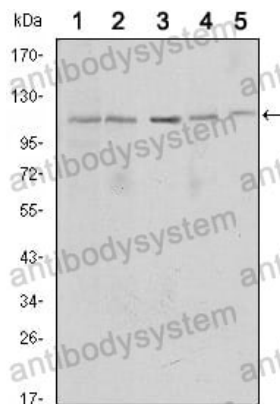
Immunohistochemical

Immunohistochemical analysis of paraffin-embedded Rat spleen(A) Rat liver(B) using SIRT1 mouse mAb with DAB staining.



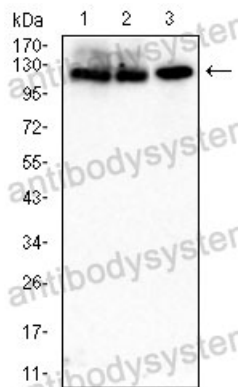
Immunohistochemical

Immunohistochemical analysis of paraffin-embedded Rabbit spleen(A) Rabbit liver(B) using SIRT1 mouse mAb with DAB staining.



Western blot

Western blot analysis using SIRT1 mouse mAb against MCF-7 (1), Jurkat (2), Hela (3), HEK293 (4) and A549 (5) cell lysate.



Western blot

Western blot analysis  
using SIRT1 mouse mAb  
against  
L1210(1),F9,(2),Hela(3)  
cell lysate.