

# Anti-KAT5/TIP60 Antibody (R3V66)

## Summary

---

<b>Catalog No.</b>	RHJ35401
<b>Clone ID</b>	R3V66
<b>Host species</b>	Mouse
<b>Tested applications</b>	IHC: 1:200-1:1000
<b>Species reactivity</b>	Human
<b>Form</b>	Liquid
<b>Storage buffer</b>	0.01M PBS, pH 7.4, 0.05% Sodium Azide.
<b>Concentration</b>	1 mg/ml
<b>Purity</b>	>95% as determined by SDS-PAGE.
<b>Clonality</b>	Monoclonal
<b>Isotype</b>	IgG2b
<b>Applications</b>	IHC
<b>Target</b>	Tip60, cPLA(2)-interacting protein, Histone acetyltransferase KAT5, 60 kDa Tat-interactive protein, KAT5, Lysine acetyltransferase 5, HTATIP, TIP60, HIV-1 Tat interactive protein, Histone acetyltransferase HTATIP
<b>Purification</b>	Protein A/G purified from cell culture supernatant.
<b>Endotoxin level</b>	Please contact with the lab for this information.
<b>Accession</b>	Q92993

## Recombinant Proteins &amp; Antibodies

**Stability and Storage**

Use a manual defrost freezer and avoid repeated freeze-thaw cycles.

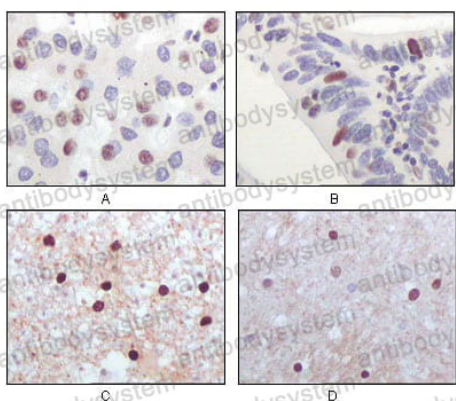
Store at 4°C short term (1-2 weeks). Store at -20°C 12 months. Store at -80°C long term.

**Note**

For research use only.

**Data Image**

---



Immunohistochemical analysis of paraffin-embedded human liver carcinoma (A), rectum carcinoma (B), normal medulla tissue (C) and normal interbrain tissues (D), showing nuclear localization using Tip60 mouse mAb with DAB staining.

Immunohistochemical