

# Anti-HAS2 Antibody (R3V61)

## Summary

---

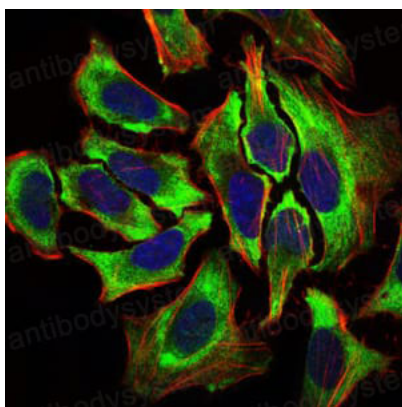
|                              |   |
|------------------------------|---|
| <b>Catalog No.</b>           | RHJ33401  |
| <b>Clone ID</b>              | R3V61   |
| <b>Host species</b>          | Mouse   |
| <b>Tested applications</b>   | ELISA: 1:10000, IF: 1:100-1:500, IHC: 1:200-1:1000, WB: 1:500-1:2000  |
| <b>Species reactivity</b>    | Human, Mouse, Rat, Monkey   |
| <b>Form</b>                  | Liquid  |
| <b>Storage buffer</b>        | 0.01M PBS, pH 7.4, 0.05% Sodium Azide.  |
| <b>Concentration</b>         | 1 mg/ml   |
| <b>Purity</b>                | >95% as determined by SDS-PAGE.   |
| <b>Clonality</b>             | Monoclonal  |
| <b>Isotype</b>               | IgG1  |
| <b>Applications</b>          | ELISA, IF, IHC, WB  |
| <b>Target</b>                | HA synthase 2, Hyaluronan synthase 2, Hyaluronic acid synthase 2, HAS2, Hyaluronate synthase 2  |
| <b>Purification</b>          | Protein A/G purified from cell culture supernatant.   |
| <b>Endotoxin level</b>       | Please contact with the lab for this information.   |
| <b>Accession</b>             | Q92819  |
| <b>Stability and Storage</b> | Use a manual defrost freezer and avoid repeated freeze-thaw cycles.<br>Store at 4°C short term (1-2 weeks). Store at -20°C 12 months. Store at -80°C long term. |

**Note**

For research use only.

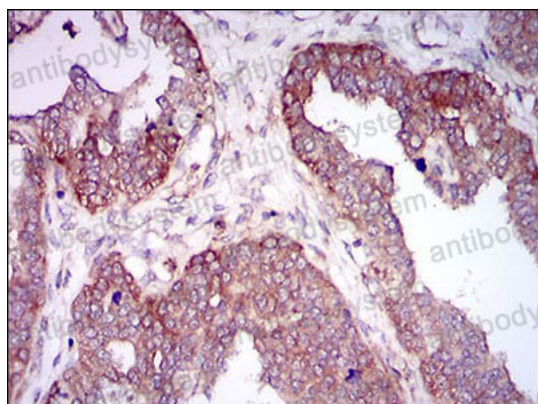
## Data Image

---



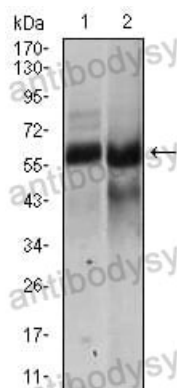
Immunofluorescence

Immunofluorescence analysis of HeLa cells using HAS2 mouse mAb (green). Blue: DRAQ5 fluorescent DNA dye. Red: Actin filaments have been labeled with Alexa Fluor-555 phalloidin.



Immunohistochemical

Immunohistochemical analysis of paraffin-embedded human ovarian cancer tissues using HAS2 mouse mAb with DAB staining.



Western blot

Western blot analysis using HAS2 mouse mAb against NTERA-2 (1), HEK293 (2) cell lysate.