

Anti-CD300f/CD300LF Antibody (R3V48)

Summary

Catalog No.	RHJ28503
Clone ID	R3V48
Host species	Mouse
Tested applications	ELISA: 1:10000, FCM: 1:200-1:400, IHC: 1:200-1:1000
Species reactivity	Human
Form	Liquid
Storage buffer	0.01M PBS, pH 7.4, 0.05% Sodium Azide.
Concentration	1 mg/ml
Purity	>95% as determined by SDS-PAGE.
Clonality	Monoclonal
Isotype	IgG2b
Applications	ELISA, FCM, IHC
Target	IREM1, Immunoglobulin superfamily member 13, NK inhibitory receptor, CD300 antigen-like family member F, CD300F, CD300LF, CLM-1, IGSF13, NKIR, IREM-1, Immune receptor expressed on myeloid cells 1, CMRF35-like molecule 1, CD300f, IgSF13, CLM1
Purification	Protein A/G purified from cell culture supernatant.
Endotoxin level	Please contact with the lab for this information.
Accession	Q8TDQ1

Stability and Storage

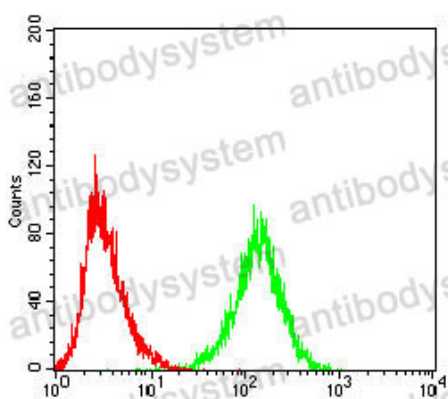
Use a manual defrost freezer and avoid repeated freeze-thaw cycles.

Store at 4°C short term (1-2 weeks). Store at -20°C 12 months. Store at -80°C long term.

Note

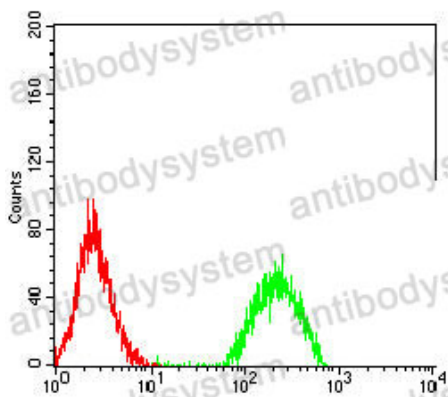
For research use only.

Data Image



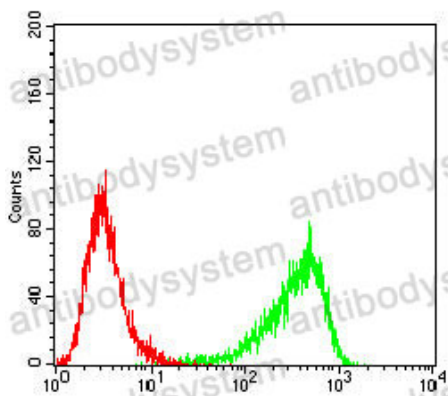
Flow Cytometry

Flow cytometric analysis of K562 cells using CD300F mouse mAb (green) and negative control (red).



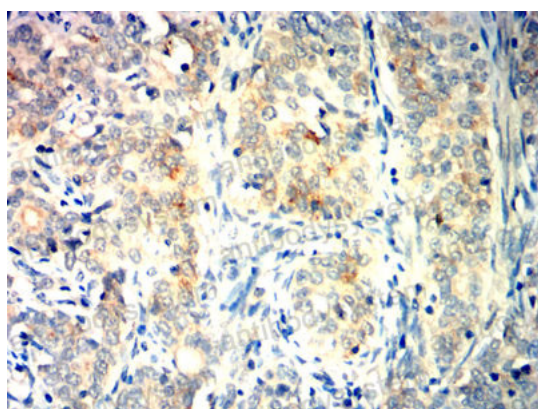
Flow Cytometry

Flow cytometric analysis of Raji cells using CD300F mouse mAb (green) and negative control (red).



Flow Cytometry

Flow cytometric analysis of U937 cells using CD300F mouse mAb (green) and negative control (red).



Immunohistochemical

Immunohistochemical analysis of paraffin-embedded human cervical cancer tissues using CD300F mouse mAb with DAB staining.