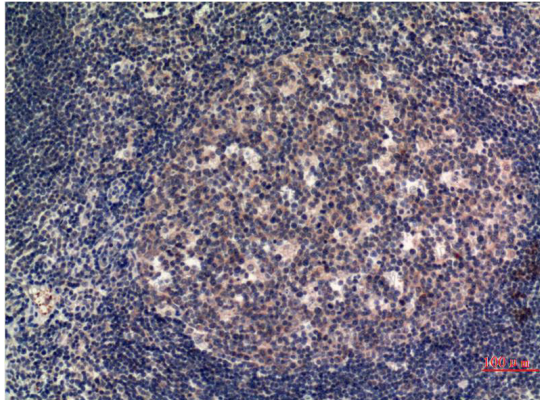


Anti-MLKL Antibody (R3V41)

Summary

Catalog No.	RHJ23605
Clone ID	R3V41
Host species	Mouse
Tested applications	IHC: 1:50-1:100
Species reactivity	Human
Form	Liquid
Storage buffer	0.01M PBS, pH 7.4, 0.5% BSA, 0.05% Sodium Azide and 50% Glycerol.
Concentration	1 mg/ml
Purity	>95% as determined by SDS-PAGE.
Clonality	Monoclonal
Isotype	IgG1
Applications	IHC
Target	Mixed lineage kinase domain-like protein, MLKL, hMLKL
Purification	Protein A/G purified from cell culture supernatant.
Endotoxin level	Please contact with the lab for this information.
Accession	Q8NB16
Stability and Storage	Use a manual defrost freezer and avoid repeated freeze-thaw cycles. Store at 4°C short term (1-2 weeks). Store at -20°C 12 months. Store at -80°C long term.
Note	For research use only.

Data Image



Immunohistochemical

Immunohistochemistry analysis of paraffin-embedded Human Tonsil Tissue using MLKL antibody. High-pressure and temperature Sodium Citrate pH 6.0 was used for antigen retrieval.



Immunohistochemical

Immunohistochemical analysis of paraffin-embedded Human tonsils using MLKL antibody. High-pressure and temperature Sodium Citrate pH 6.0 was used for antigen retrieval.