

# Research Grade Edrecolomab

## Summary

---

<b>Catalog No.</b>	DHD17403
<b>Alternative Names</b>	17-1A, CAS: 156586-89-9
<b>Clone ID</b>	Edrecolomab
<b>Host species</b>	Mouse
<b>Species reactivity</b>	Human
<b>Form</b>	Liquid
<b>Storage buffer</b>	0.01M PBS, pH 7.4.
<b>Concentration</b>	1 mg/ml
<b>Purity</b>	>95% as determined by SDS-PAGE.
<b>Clonality</b>	Monoclonal
<b>Isotype</b>	IgG2a-kappa
<b>Applications</b>	Research Grade Biosimilar
<b>Target</b>	Epithelial glycoprotein 314, hEGP314, Major gastrointestinal tumor-associated protein GA733-2, EGP314, TACSTD1, Adenocarcinoma-associated antigen, TROP1, EPCAM, Epithelial glycoprotein, KS 1/4 antigen, Tumor-associated calcium signal transducer 1, M4S1, CD326, Ep-CAM, EGP, Epithelial cell adhesion molecule, M1S2, KSA, Cell surface glycoprotein Trop-1, GA733-2, Epithelial cell surface antigen, MIC18
<b>Purification</b>	Protein A/G purified from cell culture supernatant.
<b>Endotoxin level</b>	Please contact with the lab for this information.
<b>Expression system</b>	Mammalian Cells

## Recombinant Proteins & Antibodies

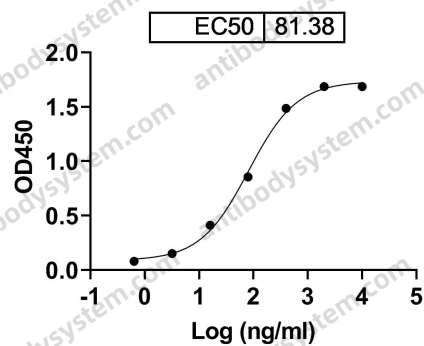
**Accession** P16422

**Stability and Storage** Use a manual defrost freezer and avoid repeated freeze-thaw cycles.  
Store at 4°C short term (1-2 weeks). Store at -20°C 12 months. Store at -80°C long term.

**Note** For research use only. Not suitable for clinical or therapeutic use.

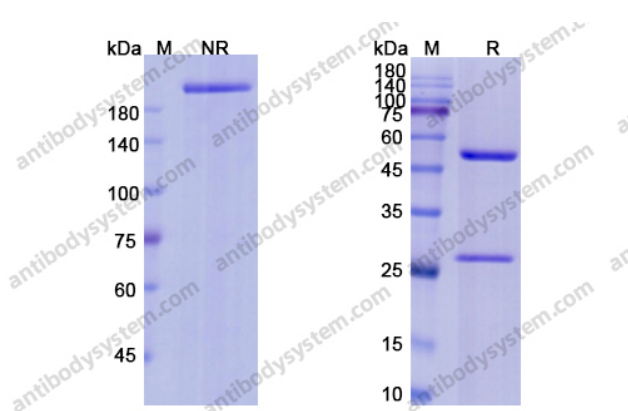
## Data Image

Edrecolomab binds with CD326/EPCAM



Detects Human CD326/EPCAM in indirect ELISAs.

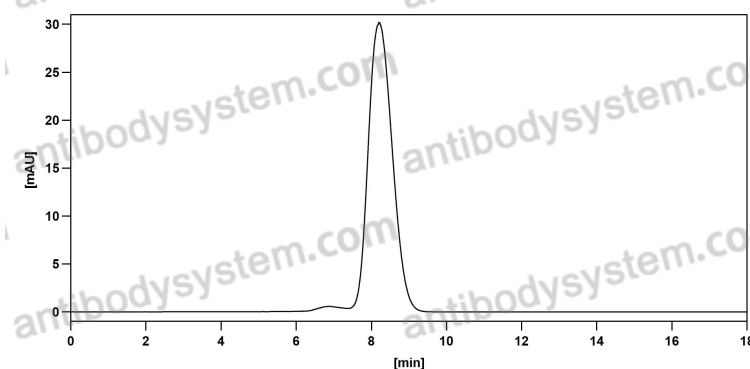
Bioactivity



SDS PAGE for Edrecolomab

SDS-PAGE

## Recombinant Proteins &amp; Antibodies



The purity of this product is >95% as determined by SEC-HPLC.

SEC-HPLC