

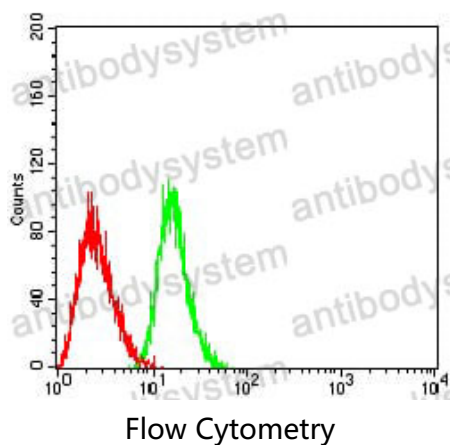
Anti-CD301/CLEC10A Antibody (R3V31)

Summary

| | |
|------------------------------|---|
| Catalog No. | RHJ18301 |
| Clone ID | R3V31 |
| Host species | Mouse |
| Tested applications | ELISA: 1:10000, FCM: 1:200-1:400 |
| Species reactivity | Human |
| Form | Liquid |
| Storage buffer | 0.01M PBS, pH 7.4, 0.05% Sodium Azide. |
| Concentration | 1 mg/ml |
| Purity | >95% as determined by SDS-PAGE. |
| Clonality | Monoclonal |
| Isotype | IgG1 |
| Applications | ELISA, FCM |
| Target | CD301, Macrophage lectin 2, C-type lectin domain family 10 member A, CLECSF13, C-type lectin superfamily member 14, CLEC10A, CLECSF14, HML |
| Purification | Protein A/G purified from cell culture supernatant. |
| Endotoxin level | Please contact with the lab for this information. |
| Accession | Q8IUN9 |
| Stability and Storage | Use a manual defrost freezer and avoid repeated freeze-thaw cycles. Store at 4°C short term (1-2 weeks). Store at -20°C 12 months. Store at -80°C long term. |

Note For research use only.

Data Image



Flow cytometric analysis of HL-60 cells using CD301 mouse mAb (green) and negative control (red).