

# Anti-MIB1 Antibody (R3V30)

## Summary

---

<b>Catalog No.</b>	RHJ17602
<b>Clone ID</b>	R3V30
<b>Host species</b>	Mouse
<b>Tested applications</b>	ELISA: 1:10000, FCM: 1:200-1:400, WB: 1:500-1:2000
<b>Species reactivity</b>	Human, Monkey
<b>Form</b>	Liquid
<b>Storage buffer</b>	0.01M PBS, pH 7.4, 0.05% Sodium Azide.
<b>Concentration</b>	1 mg/ml
<b>Purity</b>	>95% as determined by SDS-PAGE.
<b>Clonality</b>	Monoclonal
<b>Isotype</b>	IgG1
<b>Applications</b>	ELISA, FCM, WB
<b>Target</b>	Zinc finger ZZ type with ankyrin repeat domain protein 2, MIB1, DIP-1, Mind bomb homolog 1, ZZANK2, DAPK-interacting protein 1, E3 ubiquitin-protein ligase MIB1, KIAA1323, DIP1, RING-type E3 ubiquitin transferase MIB1
<b>Purification</b>	Protein A/G purified from cell culture supernatant.
<b>Endotoxin level</b>	Please contact with the lab for this information.
<b>Accession</b>	Q86YT6

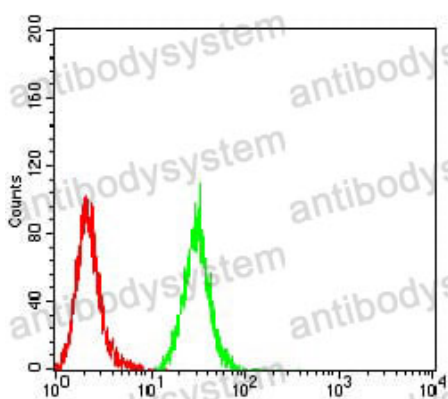
**Stability and Storage**

Use a manual defrost freezer and avoid repeated freeze-thaw cycles.

Store at 4°C short term (1-2 weeks). Store at -20°C 12 months. Store at -80°C long term.

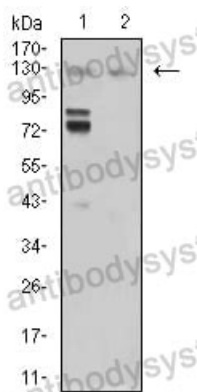
**Note**

For research use only.

**Data Image**

Flow Cytometry

Flow cytometric analysis of Hela cells using MIB1 mouse mAb (green) and negative control (red).



Western blot

Western blot analysis using MIB1 mouse mAb against Hela (1) and COS7 (2) cell lysate.