

Anti-CD163 Antibody (R3V26)

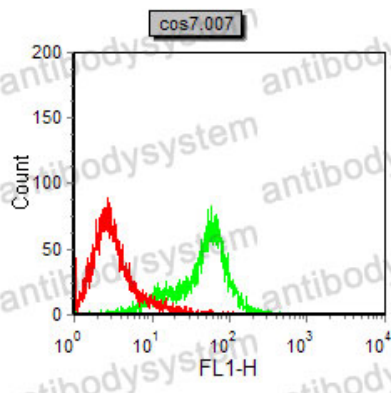
Summary

Catalog No.	RHJ16301
Clone ID	R3V26
Host species	Mouse
Tested applications	ELISA: 1:10000, FCM: 1:200-1:400, IHC: 1:200-1:1000, WB: 1:500-1:2000
Species reactivity	Human, Mouse, Rat, Rabbit, Monkey
Form	Liquid
Storage buffer	0.01M PBS, pH 7.4, 0.05% Sodium Azide.
Concentration	1 mg/ml
Purity	>95% as determined by SDS-PAGE.
Clonality	Monoclonal
Isotype	IgG1
Applications	ELISA, FCM, IHC, WB
Target	Scavenger receptor cysteine-rich type 1 protein M130, M130, Hemoglobin scavenger receptor, CD163, sCD163
Purification	Protein A/G purified from cell culture supernatant.
Endotoxin level	Please contact with the lab for this information.
Accession	Q86VB7
Stability and Storage	Use a manual defrost freezer and avoid repeated freeze-thaw cycles. Store at 4°C short term (1-2 weeks). Store at -20°C 12 months. Store at -80°C long term.

Note

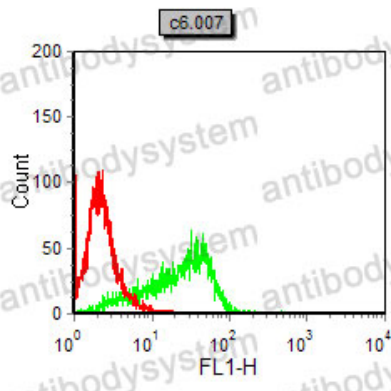
For research use only.

Data Image



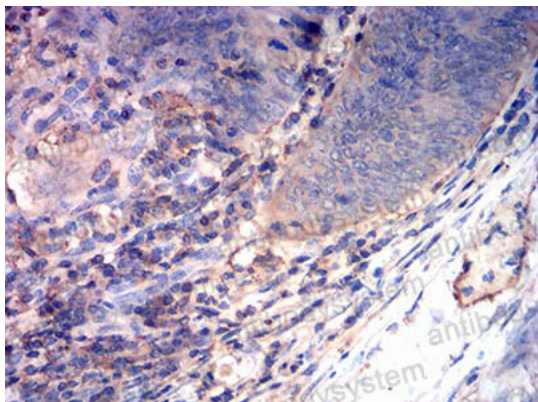
Flow Cytometry

Flow cytometric analysis of COS7 cells using CD163 mouse mAb (green) and negative control (red).



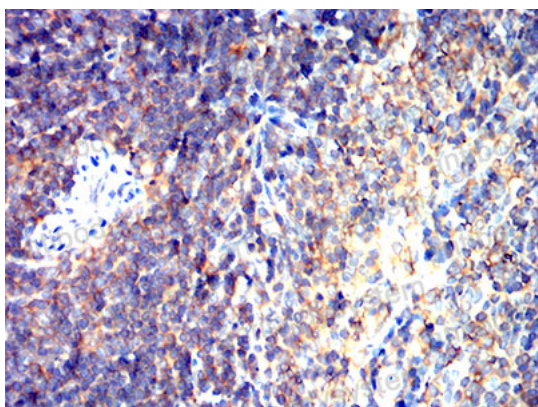
Flow Cytometry

Flow cytometric analysis of C6 cells using CD163 mouse mAb (green) and negative control (red).



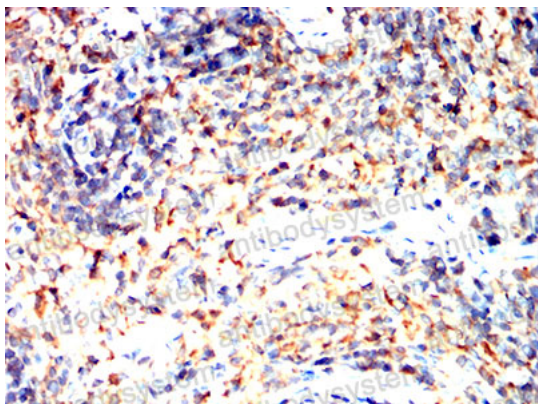
Immunohistochemical

Immunohistochemical analysis of paraffin-embedded human rectum cancer tissues using CD163 mouse mAb with DAB staining.



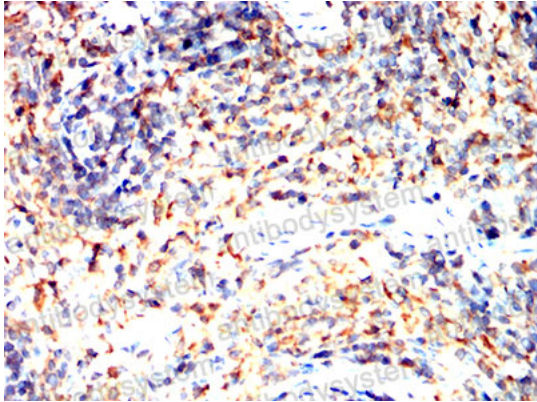
Immunohistochemical

Immunohistochemical analysis of paraffin-embedded Mouse spleen using CD163 mouse mAb with DAB staining.



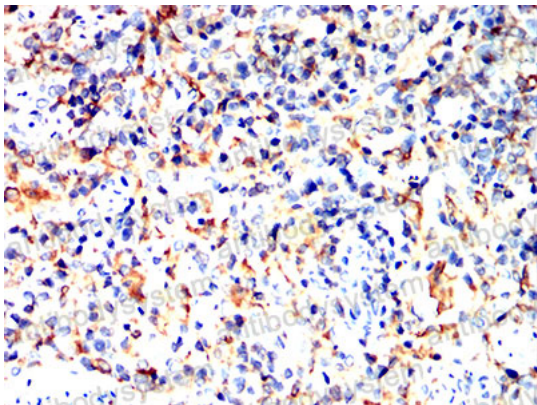
Immunohistochemical

Immunohistochemical analysis of paraffin-embedded Rat spleen using CD163 mouse mAb with DAB staining.



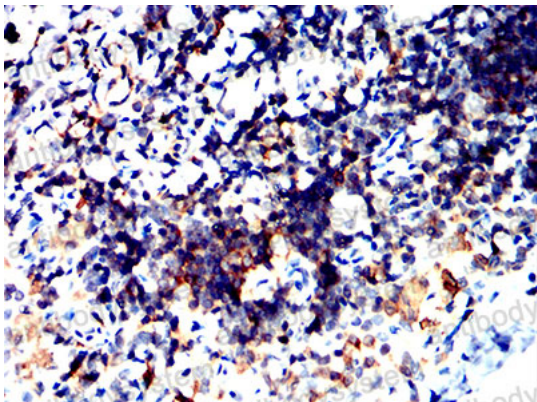
Immunohistochemical

Immunohistochemical analysis of paraffin-embedded Rat spleen using CD163 mouse mAb with DAB staining.



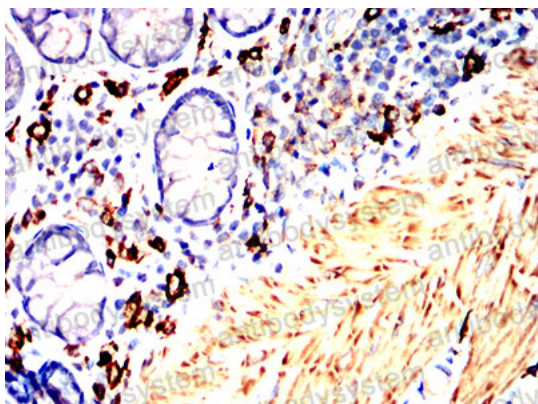
Immunohistochemical

Immunohistochemical analysis of paraffin-embedded Rabbit spleen using CD163 mouse mAb with DAB staining.



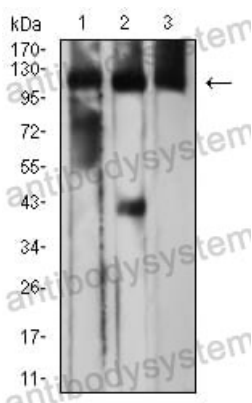
Immunohistochemical

Immunohistochemical analysis of paraffin-embedded Rabbit thymus using CD163 mouse mAb with DAB staining.



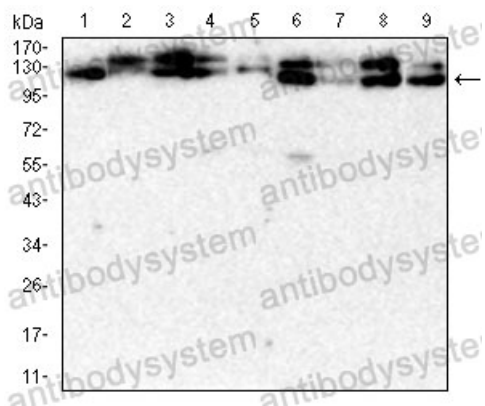
Immunohistochemical analysis of paraffin-embedded Rabbit rectum using CD163 mouse mAb with DAB staining.

Immunohistochemical



Western blot analysis using CD163 mouse mAb against Raw264.7 (1), NIH (2), and HL-60 (3) cell lysate.

Western blot



Western blot analysis using CD163 mouse mAb against PC-12(1),Raw264.7(2),NIH/3T3(3),NRK(4),C2C12(5),C6(6),L1210(7),F9(8),CHO3D10(9) cell lysate.

Western blot