

Recombinant Human CD24 Protein, C-Fc

Summary

Catalog No.	EHD65201
Alternative Names	Signal transducer CD24, CD24, CD24A, Small cell lung carcinoma cluster 4 antigen
Form	Lyophilized
Storage buffer	Lyophilized from a solution in PBS pH 7.4, 1mM EDTA, 4% Trehalose, 1% Mannitol.
Purity	>90% as determined by SDS-PAGE.
Applications	ELISA, Immunogen, SDS-PAGE, WB, Bioactivity testing in progress
Endotoxin level	Please contact with the lab for this information.
Expression system	Mammalian Cells
Accession	P25063
Protein length	Met1-Ala57
Nature	Recombinant
Predicted molecular weight	32.18 kDa
Stability and Storage	Use a manual defrost freezer and avoid repeated freeze thaw cycles. Store at 2 to 8°C for frequent use. Store at -20 to -80°C for twelve months from the date of receipt.
Reconstitution	Reconstitute in sterile water for a stock solution. A copy of datasheet will be provided with the products, please refer to it for details.
Species	Homo sapiens (Human)

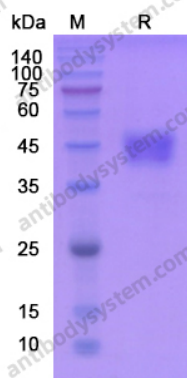
Shipping

In general, proteins are provided as lyophilized powder/frozen liquid. They are shipped out with dry ice/blue ice unless customers require otherwise.

Note

For research use only.

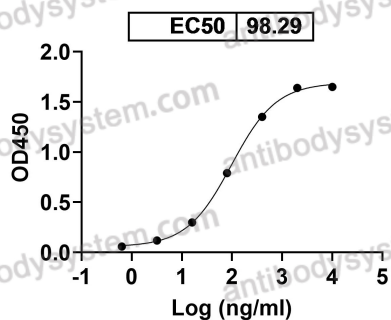
Data Image



SDS-PAGE

SDS PAGE for recombinant Human CD24

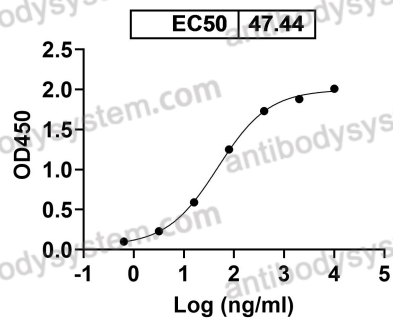
Anti-Human CD24 Antibody (3B6)
binds with Human CD24



Bioactivity

Detects Human CD24 Antibody (3B6) in indirect ELISAs.

Anti-Human CD24 Antibody (SWA11)
binds with Human CD24



Bioactivity

Detects Human CD24 Antibody (SWA11) in indirect ELISAs.