

Anti-HIST2H3C (27Ac) Antibody (R3V16)

Summary

Catalog No.	RHJ11903
Clone ID	R3V16
Host species	Mouse
Tested applications	ELISA: 1:10000, FCM: 1:200-1:400, IHC: 1:200-1:1000, WB: 1:500-1:2000
Species reactivity	Human
Form	Liquid
Storage buffer	0.01M PBS, pH 7.4, 0.05% Sodium Azide.
Concentration	1 mg/ml
Purity	>95% as determined by SDS-PAGE.
Clonality	Monoclonal
Isotype	IgG1
Applications	ELISA, FCM, IHC, WB
Target	HIST2H3A, H3C15, Histone H3/o, H3-clustered histone 14, H3-clustered histone 15, H3-clustered histone 13, H3F2, H3FM, Histone H3/m, HIST2H3D, HIST2H3C, Histone H3.2
Purification	Protein A/G purified from cell culture supernatant.
Endotoxin level	Please contact with the lab for this information.
Accession	Q71DI3

Stability and Storage

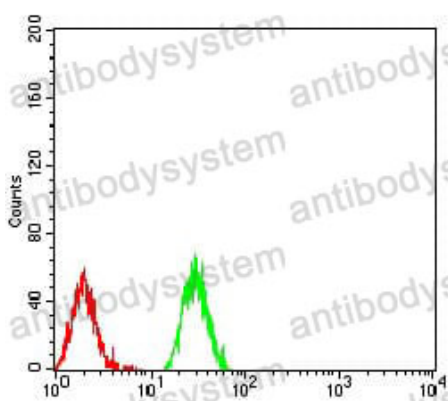
Use a manual defrost freezer and avoid repeated freeze-thaw cycles.

Store at 4°C short term (1-2 weeks). Store at -20°C 12 months. Store at -80°C long term.

Note

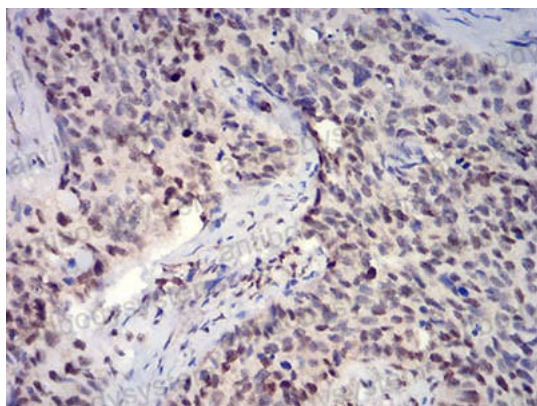
For research use only.

Data Image



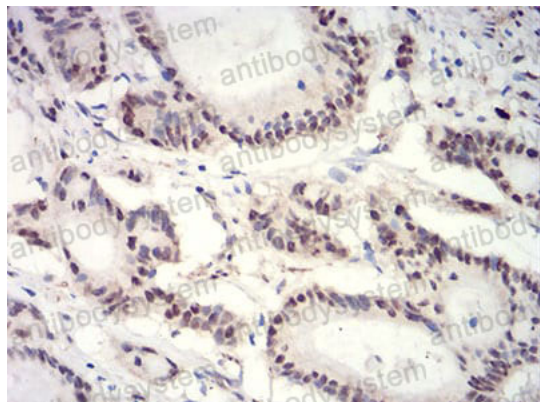
Flow Cytometry

Flow cytometric analysis of Raji cells using HIST2H3C(27Ac) mouse mAb (green) and negative control (red).



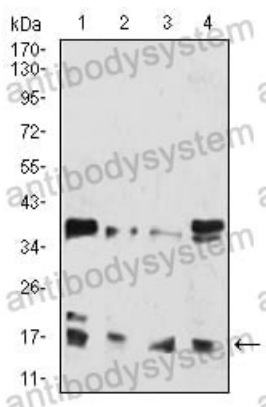
Immunohistochemical

Immunohistochemical analysis of paraffin-embedded human cervical cancer tissues using HIST2H3C(27Ac) mouse mAb with DAB staining.



Immunohistochemical

Immunohistochemical analysis of paraffin-embedded human colon cancer tissues using HIST2H3C(27Ac) mouse mAb with DAB staining.



Western blot

Western blot analysis using HIST2H3C(27Ac) mouse mAb against Hela (1), Lncap (2), Jurkat (3), and Jurkat (4) cell lysate.