

Anti-CRTC1 Antibody (R3V06)

Summary

Catalog No.	RHJ08201
Clone ID	R3V06
Host species	Mouse
Tested applications	FCM: 1:200-1:400, IF: 1:200-1:1000, WB: 1:500-1:2000
Species reactivity	Human
Form	Liquid
Storage buffer	0.01M PBS, pH 7.4, 0.05% Sodium Azide.
Concentration	1 mg/ml
Purity	>95% as determined by SDS-PAGE.
Clonality	Monoclonal
Isotype	IgG1
Applications	FCM, IF, WB
Target	WAMTP1, Transducer of CREB protein 1, TORC1, KIAA0616, MECT1, CREB-regulated transcription coactivator 1, CRTC1, Mucoepidermoid carcinoma translocated protein 1, TORC-1, Transducer of regulated cAMP response element-binding protein 1
Purification	Protein A/G purified from cell culture supernatant.
Endotoxin level	Please contact with the lab for this information.
Accession	Q6UUV9

Recombinant Proteins & Antibodies

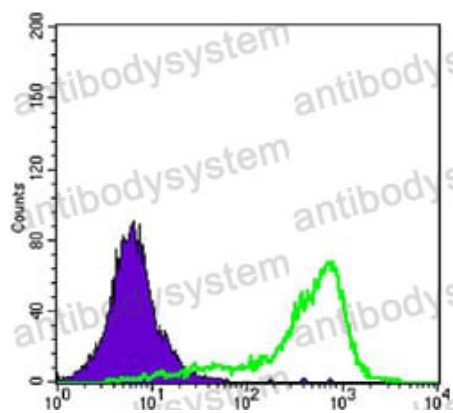
Stability and Storage

Use a manual defrost freezer and avoid repeated freeze-thaw cycles.

Store at 4°C short term (1-2 weeks). Store at -20°C 12 months. Store at -80°C long term.

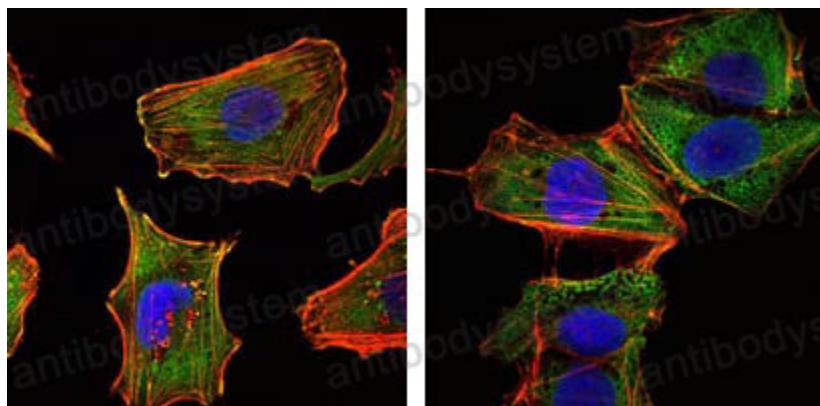
Note

For research use only.

Data Image

Flow Cytometry

Flow cytometric analysis of K562 cells using CRTC1 mouse mAb (green) and negative control (purple).



Immunofluorescence

Immunofluorescence analysis of U251 (left) and NTERA2 (right) cells using CRTC1 mAb (green). Red: Actin filaments have been labeled with DY-554 phalloidin. Blue: DRAQ5 fluorescent DNA dye.