

Anti-CRTC3 Antibody (R3V05)

Summary

Catalog No.	RHJ08102
Clone ID	R3V05
Host species	Mouse
Tested applications	ELISA: 1:10000, IF: 1:200-1:1000, IHC: 1:200-1:1000, WB: 1:500-1:2000
Species reactivity	Human, Monkey
Form	Liquid
Storage buffer	0.01M PBS, pH 7.4, 0.05% Sodium Azide.
Concentration	1 mg/ml
Purity	>95% as determined by SDS-PAGE.
Clonality	Monoclonal
Isotype	IgG1
Applications	ELISA, IF, IHC, WB
Target	CRTC3, Transducer of regulated cAMP response element-binding protein 3, Transducer of CREB protein 3, TORC3, TORC-3, CREB-regulated transcription coactivator 3
Purification	Protein A/G purified from cell culture supernatant.
Endotoxin level	Please contact with the lab for this information.
Accession	Q6UUV7

Recombinant Proteins & Antibodies

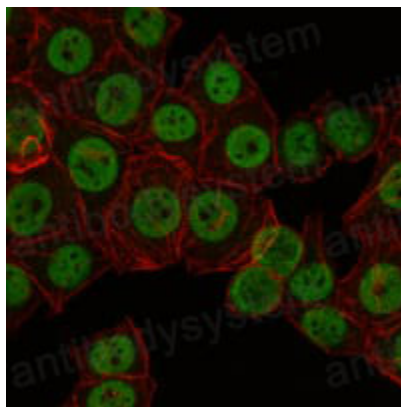
Stability and Storage

Use a manual defrost freezer and avoid repeated freeze-thaw cycles.

Store at 4°C short term (1-2 weeks). Store at -20°C 12 months. Store at -80°C long term.

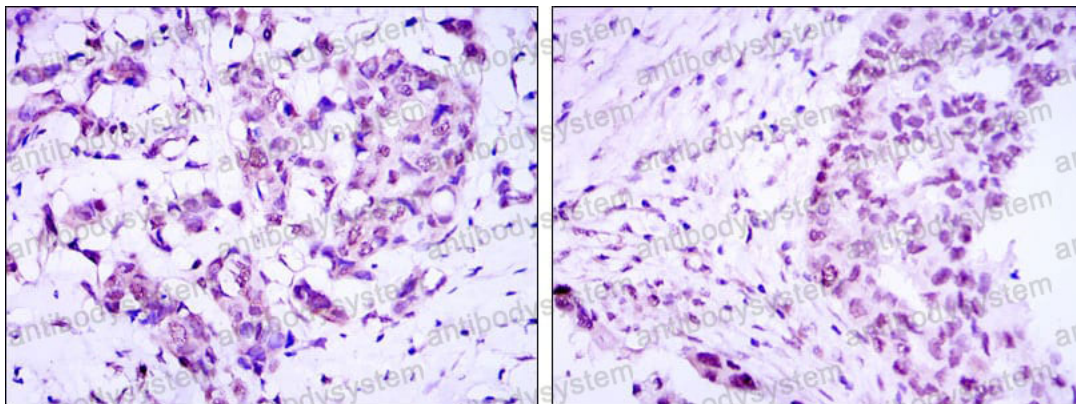
Note

For research use only.

Data Image

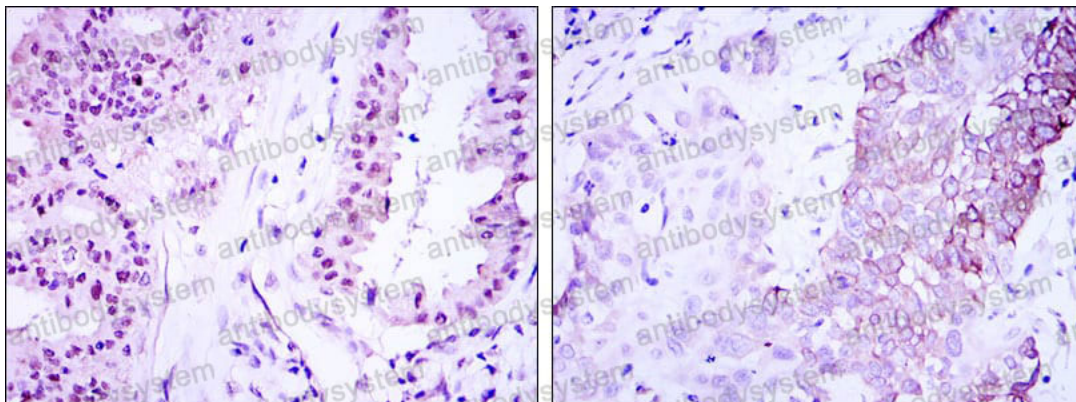
Immunofluorescence

Immunofluorescence analysis of NTERA-2 cells using CRTC3 mouse mAb (green). Red: Actin filaments have been labeled with Alexa Fluor-555 phalloidin.



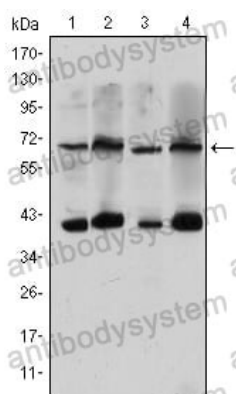
Immunohistochemical

Immunohistochemical analysis of paraffin-embedded human breast cancer (left) and ovarian cancer (right) using CRTC3 mouse mAb with DAB staining.



Immunohistochemical analysis of paraffin-embedded human lung cancer (left) and esophagus cancer (right) using CRTC3 mouse mAb with DAB staining.

Immunohistochemical



Western blot analysis using CRTC3 mouse mAb against HeLa (1), Jurkat (2), Cos7 (3) and MCF-7 (4) cell lysate.

Western blot