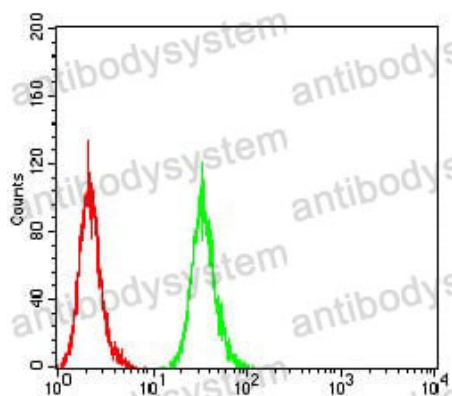


Anti-ATG16L1 Antibody (R3U97)

Summary

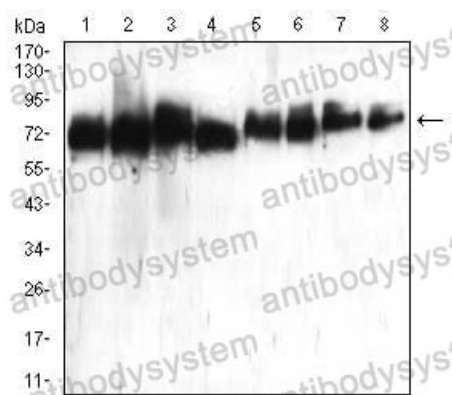
Catalog No.	RHJ04103
Clone ID	R3U97
Host species	Mouse
Tested applications	ELISA: 1:10000, FCM: 1:200-1:400, WB: 1:500-1:2000
Species reactivity	Human, Mouse, Rat
Form	Liquid
Storage buffer	0.01M PBS, pH 7.4, 0.05% Sodium Azide.
Concentration	1 mg/ml
Purity	>95% as determined by SDS-PAGE.
Clonality	Monoclonal
Isotype	IgG1
Applications	ELISA, FCM, WB
Target	ATG16L1, Autophagy-related protein 16-1, APG16L, APG16-like 1
Purification	Protein A/G purified from cell culture supernatant.
Endotoxin level	Please contact with the lab for this information.
Accession	Q676U5
Stability and Storage	Use a manual defrost freezer and avoid repeated freeze-thaw cycles. Store at 4°C short term (1-2 weeks). Store at -20°C 12 months. Store at -80°C long term.
Note	For research use only.

Data Image



Flow Cytometry

Flow cytometric analysis of Hela cells using ATG16L1 mouse mAb (green) and negative control (red).



Western blot

Western blot analysis using ATG16L1 mouse mAb against Hela (1), Raji (2), PANC-1 (3), Jurkat (4), PC-12 (5), HepG2 (6), Hek293 (7), and NIH3T3 (8) cell lysate.