

Anti-CD276/B7-H3 Antibody (R3U94)

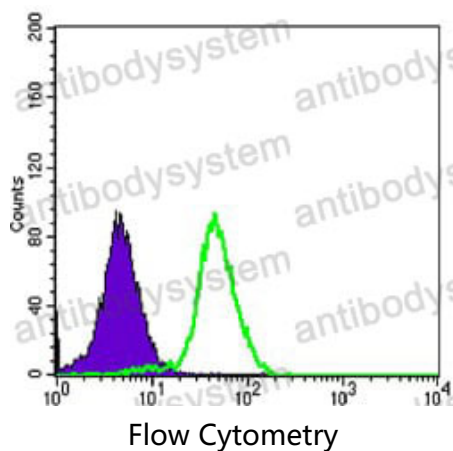
Summary

Catalog No.	RHJ04003
Clone ID	R3U94
Host species	Mouse
Tested applications	FCM: 1:200-1:400, IF: 1:50-1:500, IHC: 1:100-1:500, WB: 1:500-1:2000
Species reactivity	Human, Mouse, Rat, Rabbit, Monkey
Form	Liquid
Storage buffer	0.01M PBS, pH 7.4, 0.05% Sodium Azide.
Concentration	1 mg/ml
Purity	>95% as determined by SDS-PAGE.
Clonality	Monoclonal
Isotype	IgG1
Applications	FCM, IF, IHC, WB
Target	CD276, B7-H3, Costimulatory molecule, B7H3, 4Ig-B7-H3, B7 homolog 3, CD276 antigen
Purification	Protein A/G purified from cell culture supernatant.
Endotoxin level	Please contact with the lab for this information.
Accession	Q5ZPR3
Stability and Storage	Use a manual defrost freezer and avoid repeated freeze-thaw cycles. Store at 4°C short term (1-2 weeks). Store at -20°C 12 months. Store at -80°C long term.

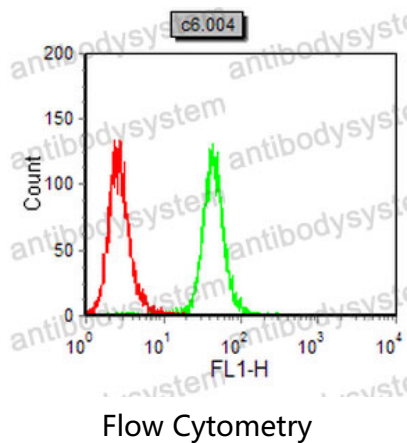
Note

For research use only.

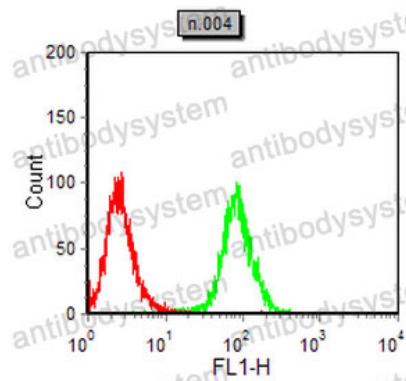
Data Image



Flow cytometric analysis of PC-3 cells using CD276 mouse mAb (green) and negative control (purple).

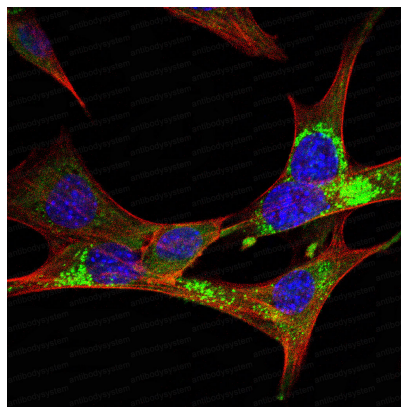


Flow cytometric analysis of C6 cells using CD276 mouse mAb (green) and negative control (red).



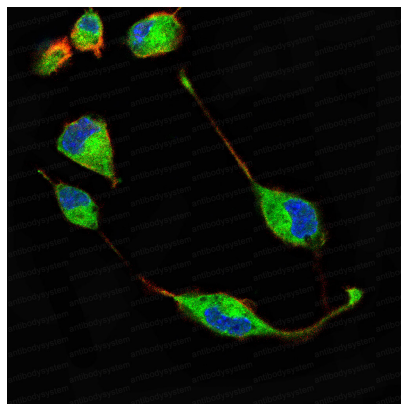
Flow Cytometry

Flow cytometric analysis of NIH/3T3 cells using CD276 mouse mAb (green) and negative control (red).



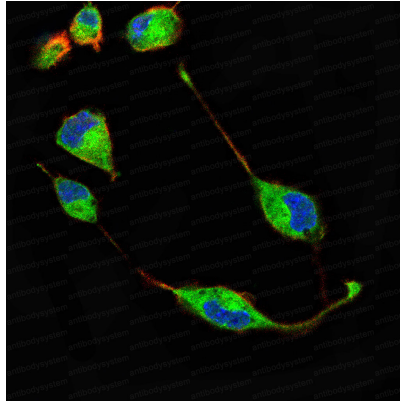
Immunofluorescence

Immunofluorescence analysis of NIH/3T3 cells using CD276 mouse mAb (green). Blue: DRAQ5 fluorescent DNA dye. Red: Actin filaments have been labeled with Alexa Fluor-555 phalloidin.



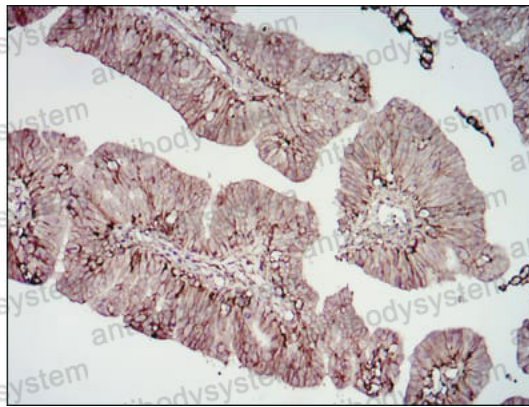
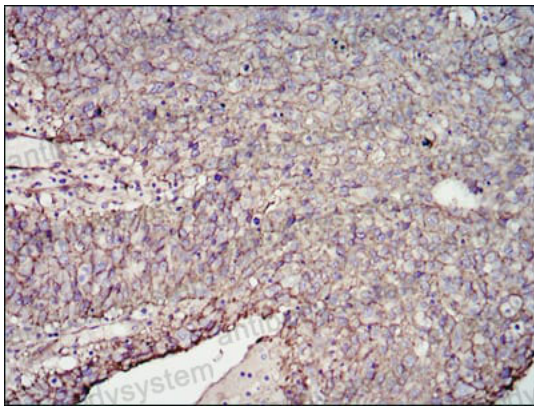
Immunofluorescence

Immunofluorescence analysis of RSC-96 cells using CD276 mouse mAb (green). Blue: DRAQ5 fluorescent DNA dye. Red: Actin filaments have been labeled with Alexa Fluor-555 phalloidin.



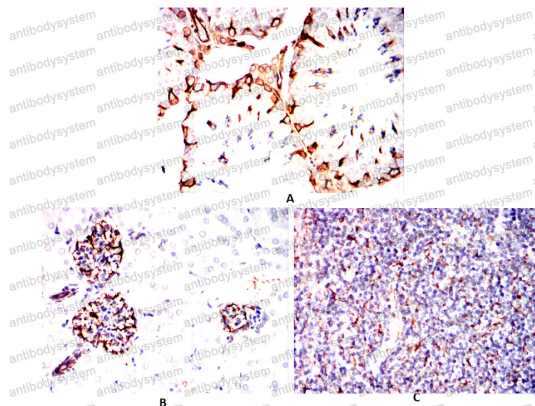
Immunofluorescence

Immunofluorescence analysis of RSC-96 cells using CD276 mouse mAb (green). Blue: DRAQ5 fluorescent DNA dye. Red: Actin filaments have been labeled with Alexa Fluor-555 phalloidin.



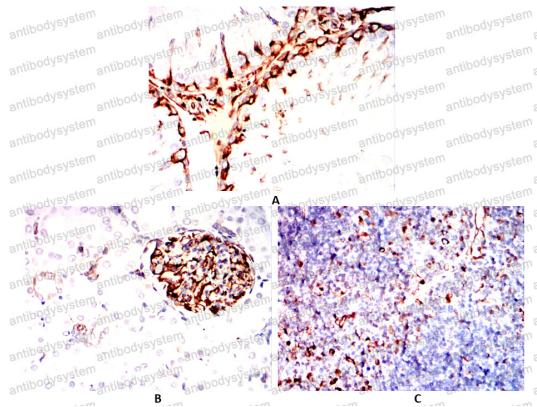
Immunohistochemical

Immunohistochemical analysis of paraffin-embedded human cervical cancer tissues (left) and ovarian cancer tissues (right) using CD276 mouse mAb with DAB staining.



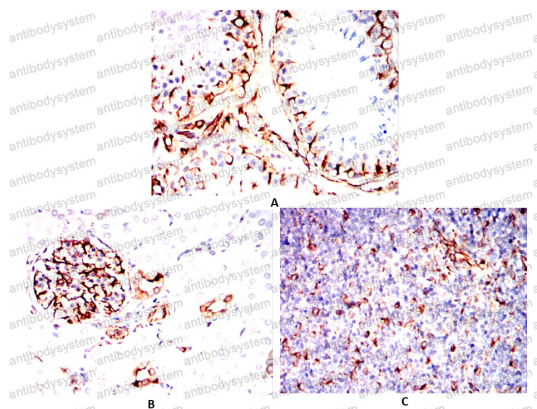
Immunohistochemical

Immunohistochemical analysis of paraffin-embedded Mouse testis (A) Mouse kidney (B) Mouse thymus (C) using CD276 mouse mAb with DAB staining.



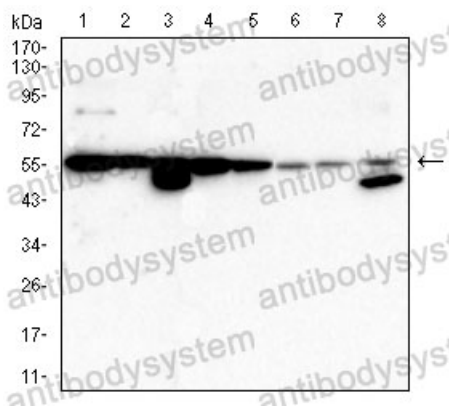
Immunohistochemical

Immunohistochemical analysis of paraffin-embedded Rat testicles(A) Rat kidney(B) Rat thymus(C) using CD276 mouse mAb with DAB staining.



Immunohistochemical

Immunohistochemical analysis of paraffin-embedded Rabbit testicles(A) Rabbit kidney(B) Rabbit thymus(C) using CD276 mouse mAb with DAB staining.



Western blot

Western blot analysis using CD276 mouse mAb against NIH/3T3(1) NRK(2) C2C12(3) C6(4) L1210(5) COS7(6) CHO3D10(7) HeLa(8) cell lysate.