

Anti-CRTC2 Antibody (R3U85)

Summary

Catalog No.	RHH86802
Clone ID	R3U85
Host species	Mouse
Tested applications	FCM: 1:200-1:400, IF: 1:200-1:1000, IHC: 1:200-1:1000, WB: 1:500-1:2000
Species reactivity	Human, Monkey
Form	Liquid
Storage buffer	0.01M PBS, pH 7.4, 0.05% Sodium Azide.
Concentration	1 mg/ml
Purity	>95% as determined by SDS-PAGE.
Clonality	Monoclonal
Isotype	IgG1
Applications	FCM, IF, IHC, WB
Target	CREB-regulated transcription coactivator 2, TORC-2, Transducer of CREB protein 2, CRTC2, Transducer of regulated cAMP response element-binding protein 2, TORC2
Purification	Protein A/G purified from cell culture supernatant.
Endotoxin level	Please contact with the lab for this information.
Accession	Q53ET0

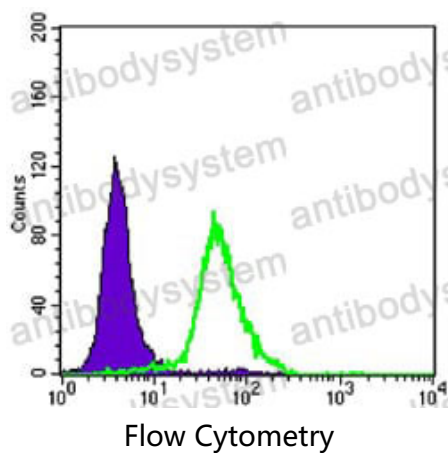
Stability and Storage

Use a manual defrost freezer and avoid repeated freeze-thaw cycles.

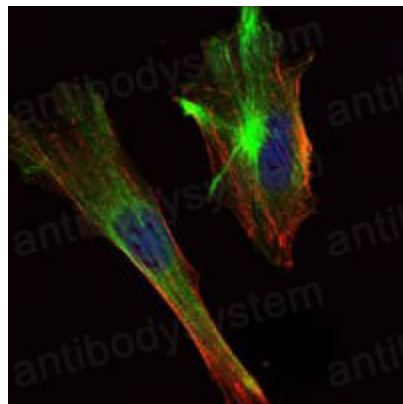
Store at 4°C short term (1-2 weeks). Store at -20°C 12 months. Store at -80°C long term.

Note

For research use only.

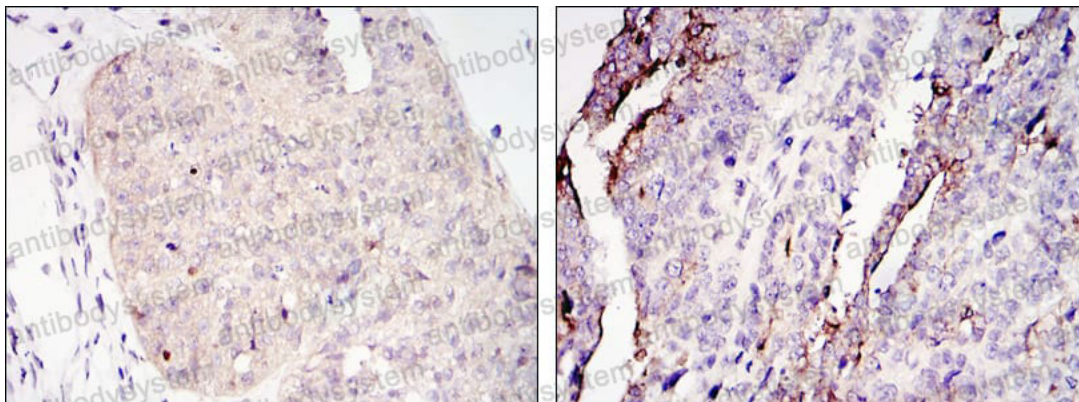
Data Image

Flow cytometric analysis of HeLa cells using CRTC2 mouse mAb (green) and negative control (purple).



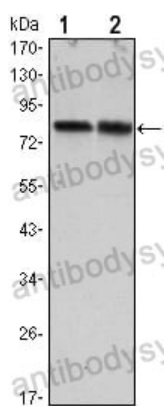
Immunofluorescence

Immunofluorescence analysis of HeLa cells using CRTC2 mouse mAb (green). Blue: DRAQ5 fluorescent DNA dye. Red: Actin filaments have been labeled with Alexa Fluor-555 phalloidin.



Immunohistochemical analysis of paraffin-embedded human ovary tumour tissues (left) and lung cancer (right) using CRTC2 mouse mAb with DAB staining.

Immunohistochemical



Western blot analysis using CRTC2 mouse mAb against Hela (1) and HEK293 (2) cell lysate.

Western blot