

Anti-MMEL1 Antibody (R3U78)

Summary

Catalog No.	RHH73101
Clone ID	R3U78
Host species	Mouse
Tested applications	ELISA: 1:10000, FCM: 1:200-1:400, IHC: 1:200-1:1000
Species reactivity	Human
Form	Liquid
Storage buffer	0.01M PBS, pH 7.4, 0.05% Sodium Azide.
Concentration	1 mg/ml
Purity	>95% as determined by SDS-PAGE.
Clonality	Monoclonal
Isotype	IgG1
Applications	ELISA, FCM, IHC
Target	Neprilysin-2 secreted, Neprilysin-2, Neprilysin II, MELL1, MMEL2, NEP2, NEPII, NEP2(s), Membrane metallo-endopeptidase-like 1, MMEL1, NEP2(m), Membrane metallo-endopeptidase-like 2, NL2
Purification	Protein A/G purified from cell culture supernatant.
Endotoxin level	Please contact with the lab for this information.
Accession	Q495T6

Stability and Storage

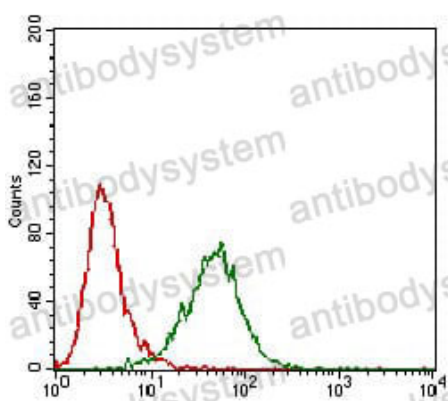
Use a manual defrost freezer and avoid repeated freeze-thaw cycles.

Store at 4°C short term (1-2 weeks). Store at -20°C 12 months. Store at -80°C long term.

Note

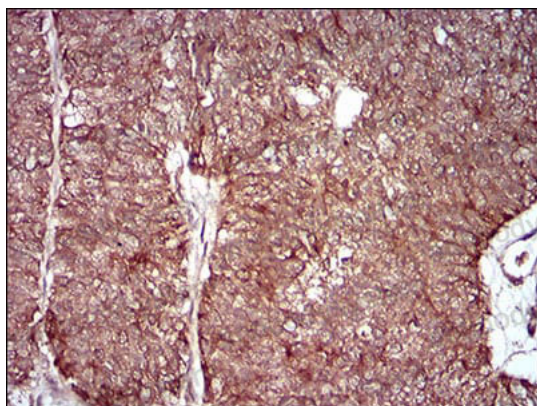
For research use only.

Data Image



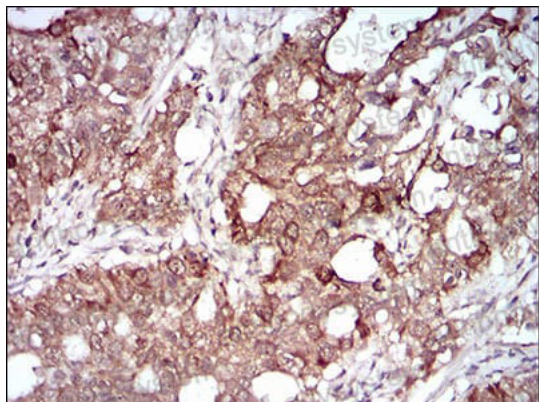
Flow Cytometry

Flow cytometric analysis of Hela cells using MMEL1 mouse mAb (green) and negative control (red).



Immunohistochemical

Immunohistochemical analysis of paraffin-embedded human ovarian cancer tissues using MMEL1 mouse mAb with DAB staining.



Immunohistochemical

Immunohistochemical analysis of paraffin-embedded human cervical cancer tissues using MMEL1 mouse mAb with DAB staining.