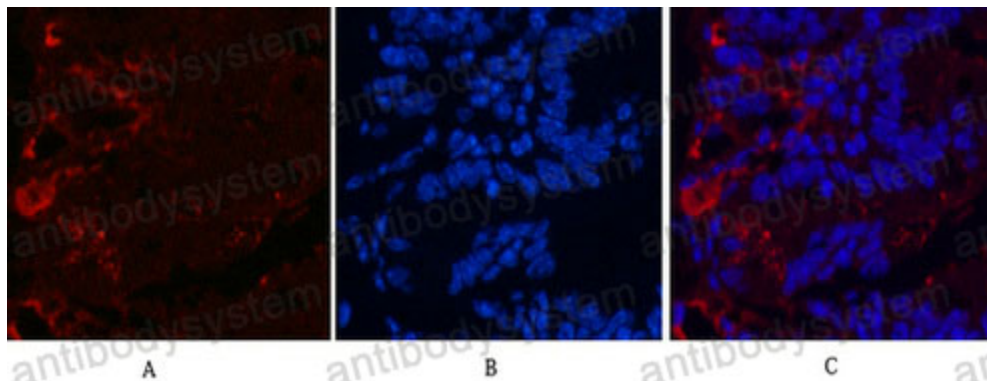


Anti-KIF7 Antibody (R3U69)

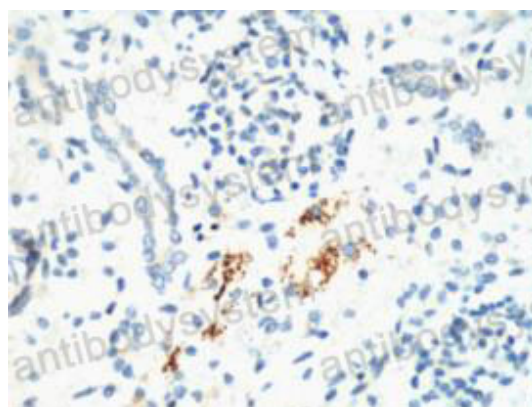
Summary

Catalog No.	RHH46701
Clone ID	R3U69
Host species	Mouse
Tested applications	IF: 1:50-1:200, IHC: 1:50-1:100
Species reactivity	Human, Mouse, Rat
Form	Liquid
Storage buffer	0.01M PBS, pH 7.4, 0.5% BSA, 0.05% Sodium Azide and 50% Glycerol.
Concentration	1 mg/ml
Purity	>95% as determined by SDS-PAGE.
Clonality	Monoclonal
Isotype	IgG1
Applications	IF, IHC
Target	KIF7, Kinesin-like protein KIF7
Purification	Protein A/G purified from cell culture supernatant.
Endotoxin level	Please contact with the lab for this information.
Accession	Q2M1P5
Stability and Storage	Use a manual defrost freezer and avoid repeated freeze-thaw cycles. Store at 4°C short term (1-2 weeks). Store at -20°C 12 months. Store at -80°C long term.
Note	For research use only.

Data Image



Immunofluorescence



Immunohistochemical

Immunohistochemistry analysis of paraffin-embedded mouse kidney tissue using KIF7 antibody. High-pressure and temperature Sodium Citrate pH 6.0 was used for antigen retrieval.