

Anti-IMMT Antibody (R3U63)

Summary

Catalog No.	RHH40202
Clone ID	R3U63
Host species	Mouse
Tested applications	IHC: 1:100-1:200, IP: 1:100-1:200, WB: 1:500-1:1000
Species reactivity	Human
Form	Liquid
Storage buffer	0.01M PBS, pH 7.4, 0.05% Sodium Azide.
Concentration	1 mg/ml
Purity	>95% as determined by SDS-PAGE.
Clonality	Monoclonal
Isotype	IgG1
Applications	IHC, IP, WB
Target	p87/89, Mitofilin, Mitochondrial inner membrane protein, IMMT, HMP, MICOS complex subunit MIC60, Cell proliferation-inducing gene 4/52 protein, MIC60, MINOS2
Purification	Protein A/G purified from cell culture supernatant.
Endotoxin level	Please contact with the lab for this information.
Accession	Q16891

Stability and Storage

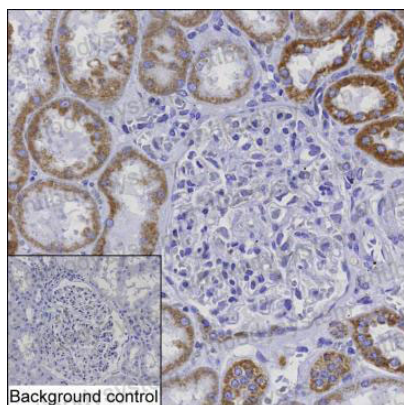
Use a manual defrost freezer and avoid repeated freeze-thaw cycles.

Store at 4°C short term (1-2 weeks). Store at -20°C 12 months. Store at -80°C long term.

Note

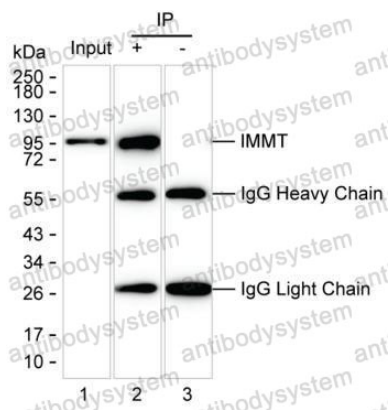
For research use only.

Data Image



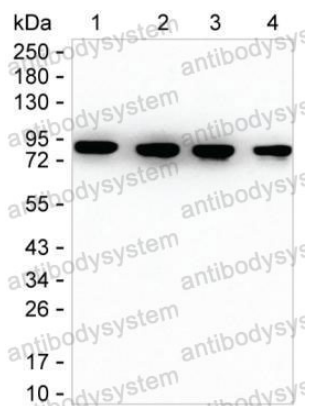
Immunohistochemical

IHC-P analysis of kidney tissue by IMMT antibody (RHH40202). IHC-P was performed using sections of the formalin-fixed paraffin-embedded kidney tissue; Result: Cells of tubules are positively stained at the cytoplasm.



Immunoprecipitation

Lane 1: MCF7 lysate; Lane 2: IMMT immunoprecipitated from MCF7 lysate by RHH40202; Lane 3: The same as Lane 2 but use IgG isotype control antibody; Result: RHH40202 can immunoprecipitate IMMT;



Western blot

Lane 1: 15 µg of MCF7 lysate; Lane 2: 15 µg of HeLa lysate; Lane 3: 15 µg of HEK-293 lysate; Lane 4: 15 µg of Raji lysate; Result: RHH40202 can detect IMMT by Western blotting.