

Anti-CD167b/DDR2 Antibody (R3U61)

Summary

Catalog No.	RHH38602
Clone ID	R3U61
Host species	Mouse
Tested applications	FCM: 1:200-1:400, IF: 1:200-1:1000, IHC: 1:200-1:1000
Species reactivity	Human, Mouse, Rat, Rabbit
Form	Liquid
Storage buffer	0.01M PBS, pH 7.4, 0.05% Sodium Azide.
Concentration	1 mg/ml
Purity	>95% as determined by SDS-PAGE.
Clonality	Monoclonal
Isotype	IgG2a
Applications	FCM, IF, IHC
Target	Discoidin domain-containing receptor 2, Discoidin domain receptor 2, Tyrosine-protein kinase TYRO10, TKT, TYRO10, CD167b, Discoidin domain-containing receptor tyrosine kinase 2, Receptor protein-tyrosine kinase TKT, DDR2, Neurotrophic tyrosine kinase, receptor-related 3, NTRKR3, CD167 antigen-like family member B
Purification	Protein A/G purified from cell culture supernatant.
Endotoxin level	Please contact with the lab for this information.
Accession	Q16832

Stability and Storage

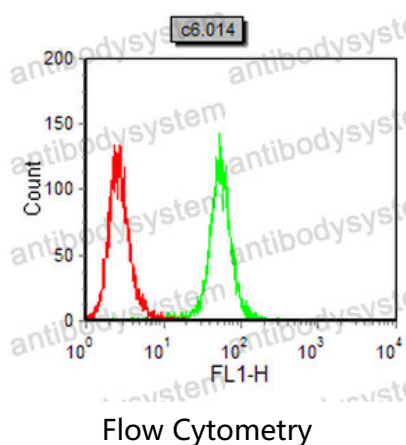
Use a manual defrost freezer and avoid repeated freeze-thaw cycles.

Store at 4°C short term (1-2 weeks). Store at -20°C 12 months. Store at -80°C long term.

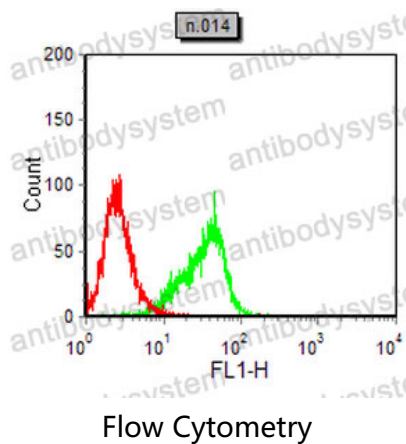
Note

For research use only.

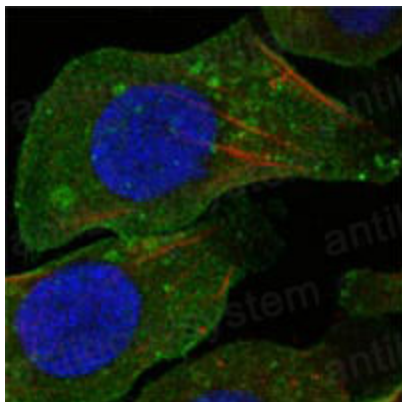
Data Image



Flow cytometric analysis of C6 cells using DDR2 mouse mAb (green) and negative control (red).



Flow cytometric analysis of NIH3T3 cells using DDR2 mouse mAb (green) and negative control (red).



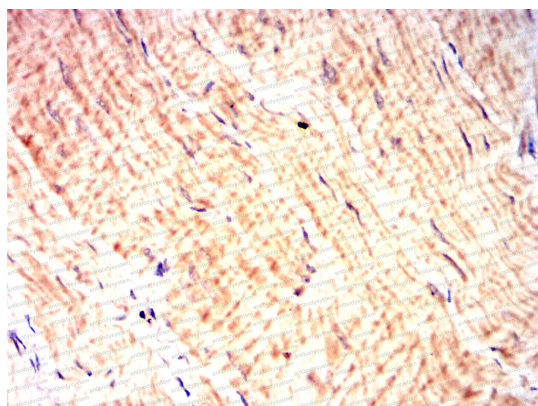
Immunofluorescence

Confocal Immunofluorescence analysis of A549 cells using DDR2 mouse mAb (green). Red: Actin filaments have been labeled with DY-554 phalloidin. Blue: DRAQ5 fluorescent DNA dye.



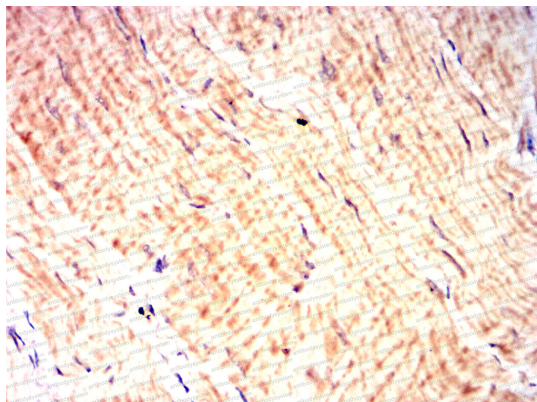
Immunohistochemical

Immunohistochemical analysis of paraffin-embedded human skeletal muscle tissues using DDR2 mouse mAb.



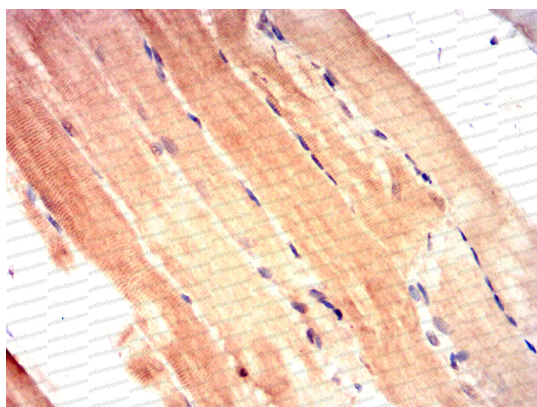
Immunohistochemical

Immunohistochemical analysis of paraffin-embedded Mouse muscle using DDR2 mouse mAb with DAB staining.



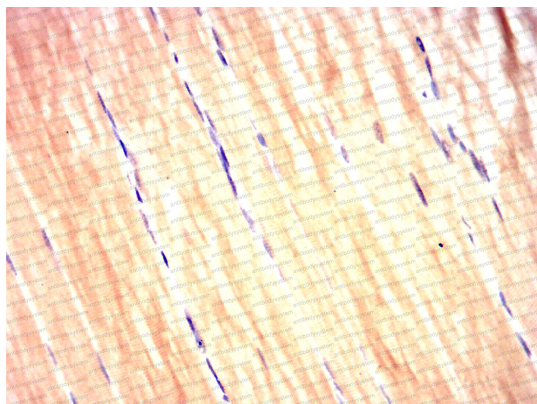
Immunohistochemical

Immunohistochemical analysis of paraffin-embedded Mouse muscle using DDR2 mouse mAb with DAB staining.



Immunohistochemical

Immunohistochemical analysis of paraffin-embedded Rat muscle using DDR2 mouse mAb with DAB staining.



Immunohistochemical

Immunohistochemical analysis of paraffin-embedded Rabbit muscle using DDR2 mouse mAb with DAB staining.