

# Anti-DECR1 Antibody (R3U52)

## Summary

---

<b>Catalog No.</b>	RHH35401
<b>Clone ID</b>	R3U52
<b>Host species</b>	Mouse
<b>Tested applications</b>	IHC: 1:100-1:200, IP: 1:100-1:200
<b>Species reactivity</b>	Human
<b>Form</b>	Liquid
<b>Storage buffer</b>	0.01M PBS, pH 7.4, 0.05% Sodium Azide.
<b>Concentration</b>	1 mg/ml
<b>Purity</b>	>95% as determined by SDS-PAGE.
<b>Clonality</b>	Monoclonal
<b>Isotype</b>	IgG1
<b>Applications</b>	IHC, IP
<b>Target</b>	DECR1, SDR18C1, 4-enoyl-CoA reductase [NADPH], 2,4-dienoyl-CoA reductase [NADPH], DECR, 2,4-dienoyl-CoA reductase [(3E)-enoyl-CoA-producing], mitochondrial, Short chain dehydrogenase/reductase family 18C member 1
<b>Purification</b>	Protein A/G purified from cell culture supernatant.
<b>Endotoxin level</b>	Please contact with the lab for this information.
<b>Accession</b>	Q16698

## Stability and Storage

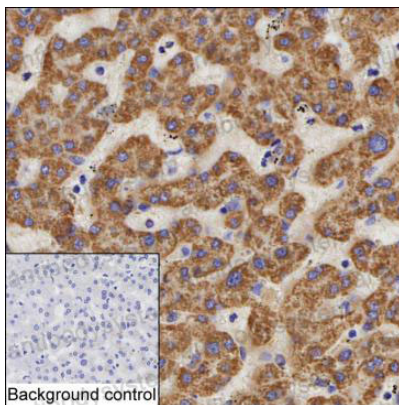
Use a manual defrost freezer and avoid repeated freeze-thaw cycles.

Store at 4°C short term (1-2 weeks). Store at -20°C 12 months. Store at -80°C long term.

## Note

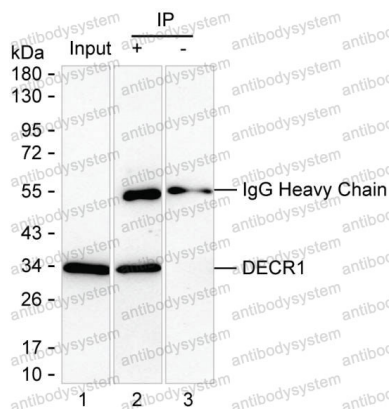
For research use only.

## Data Image



Immunohistochemical

IHC-P analysis of liver tissue by DECR1 antibody (RHH35401). IHC-P was performed using sections of the formalin-fixed paraffin-embedded liver tissue; Result: Hepatocytes are positively stained at the cytoplasm.



Immunoprecipitation

Lane 1: SK-BR-3 lysate; Lane 2: DECR1 immunoprecipitated from SK-BR-3 by RHH35401; Lane 3: The same Lane 2 but use IgG isotype control antibody ; Result: RHH35401 can immunoprecipitate DECR1;