

Anti-HIF1A Antibody (R3U50)

Summary

Catalog No.	RHH34303
Clone ID	R3U50
Host species	Mouse
Tested applications	ELISA: 1:10000, IF: 1:200-1:1000, IHC: 1:200-1:1000, WB: 1:500-1:2000
Species reactivity	Human, Mouse, Monkey
Form	Liquid
Storage buffer	0.01M PBS, pH 7.4, 0.05% Sodium Azide.
Concentration	1 mg/ml
Purity	>95% as determined by SDS-PAGE.
Clonality	Monoclonal
Isotype	IgG1
Applications	ELISA, IF, IHC, WB
Target	HIF1A, MOP1, bHLHe78, Basic-helix-loop-helix-PAS protein MOP1, HIF-1-alpha, BHLHE78, Member of PAS protein 1, Hypoxia-inducible factor 1-alpha, ARNT-interacting protein, PAS domain-containing protein 8, HIF1-alpha, PASD8, Class E basic helix-loop-helix protein 78
Purification	Protein A/G purified from cell culture supernatant.
Endotoxin level	Please contact with the lab for this information.
Accession	Q16665

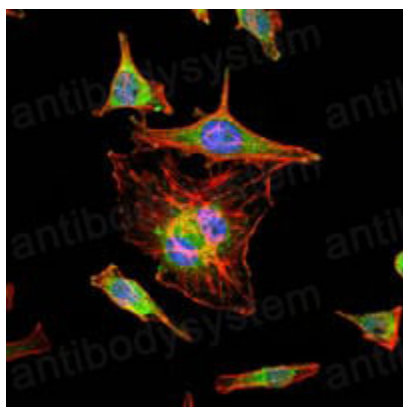
Stability and Storage

Use a manual defrost freezer and avoid repeated freeze-thaw cycles.

Store at 4°C short term (1-2 weeks). Store at -20°C 12 months. Store at -80°C long term.

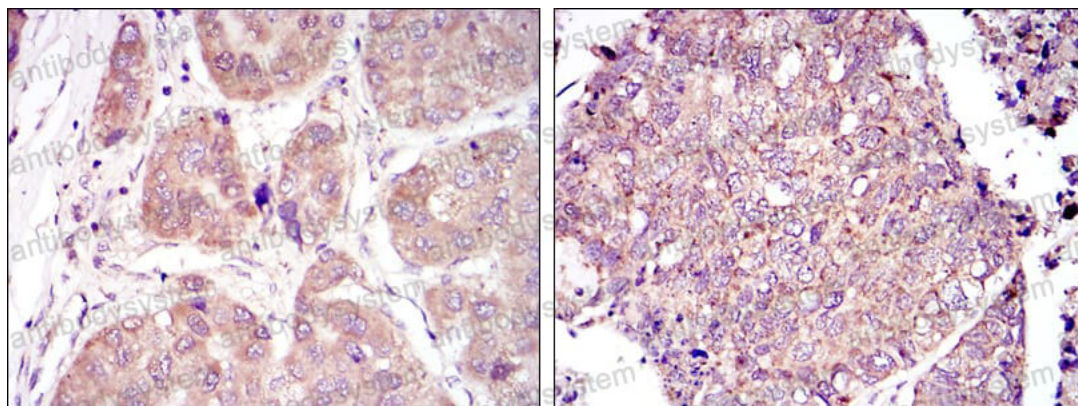
Note

For research use only.

Data Image

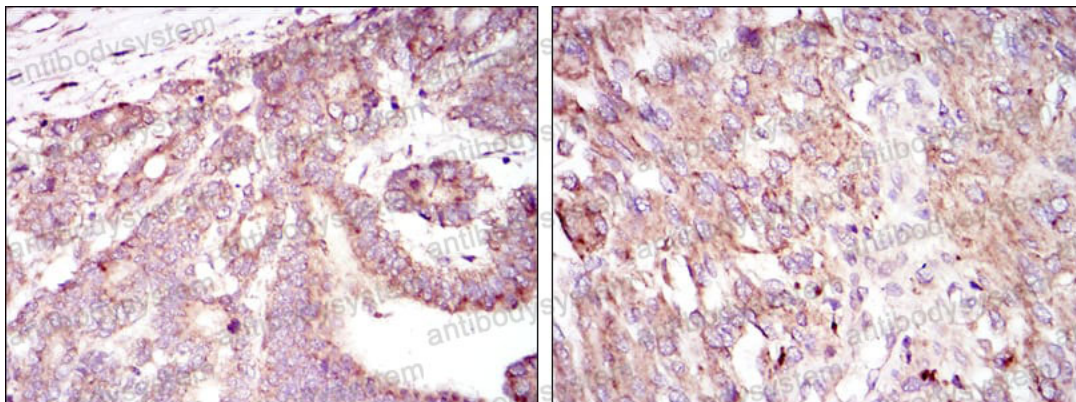
Immunofluorescence

Immunofluorescence analysis of Hela cells using HIF1A mouse mAb (green). Blue: DRAQ5 fluorescent DNA dye. Red: Actin filaments have been labeled with Alexa Fluor-555 phalloidin.



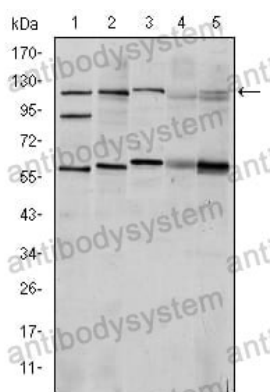
Immunohistochemical

Immunohistochemical analysis of paraffin-embedded human liver cancer tissues (left) and lung cancer tissues (right) using HIF1A mouse mAb with DAB staining.



Immunohistochemical analysis of paraffin-embedded human stomach cancer tissues (left) and brain tumor tissues (right) using HIF1A mouse mAb with DAB staining.

Immunohistochemical



Western blot analysis using HIF1A mouse mAb against Cos7 (1), HeLa (2), Jurkat (3), RAJI (4) and NIH/3T3 (5) cell lysate.

Western blot