

# Anti-SMN1 Antibody (R3U43)

## Summary

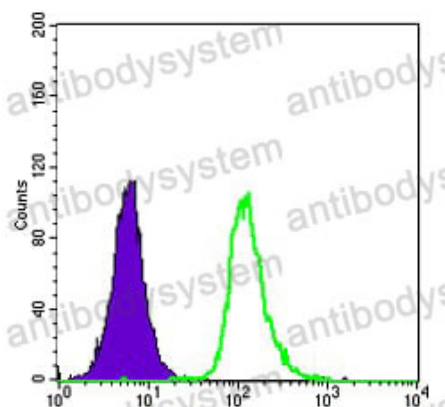
---

<b>Catalog No.</b>	RHH32806
<b>Clone ID</b>	R3U43
<b>Host species</b>	Mouse
<b>Tested applications</b>	ELISA: 1:10000, FCM: 1:200-1:400, IHC: 1:200-1:1000, WB: 1:500-1:2000
<b>Species reactivity</b>	Human, Monkey
<b>Form</b>	Liquid
<b>Storage buffer</b>	0.01M PBS, pH 7.4, 0.05% Sodium Azide.
<b>Concentration</b>	1 mg/ml
<b>Purity</b>	>95% as determined by SDS-PAGE.
<b>Clonality</b>	Monoclonal
<b>Isotype</b>	IgG1
<b>Applications</b>	ELISA, FCM, IHC, WB
<b>Target</b>	SMNC, Survival motor neuron protein, SMNT, Component of gems 1, SMN1, SMN, Gemin-1
<b>Purification</b>	Protein A/G purified from cell culture supernatant.
<b>Endotoxin level</b>	Please contact with the lab for this information.
<b>Accession</b>	Q16637
<b>Stability and Storage</b>	Use a manual defrost freezer and avoid repeated freeze-thaw cycles. Store at 4°C short term (1-2 weeks). Store at -20°C 12 months. Store at -80°C long term.

Note

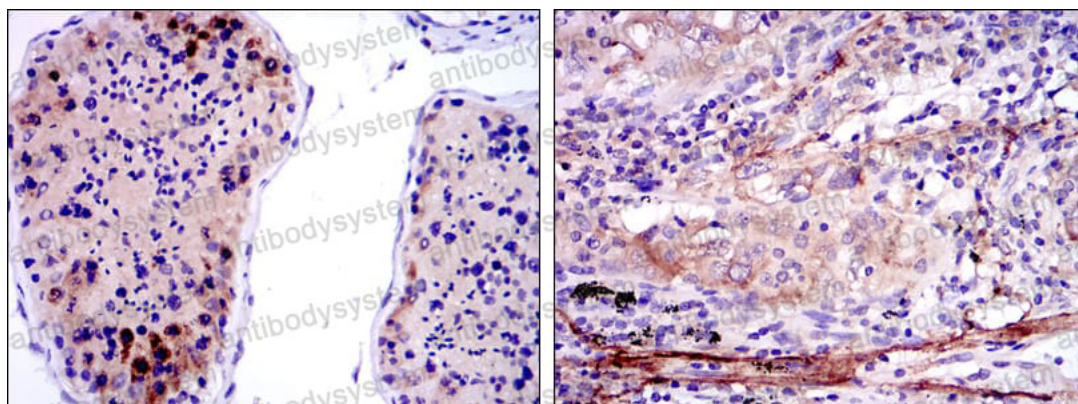
For research use only.

## Data Image



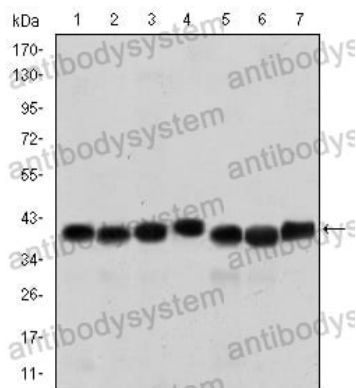
Flow Cytometry

Flow cytometric analysis of HepG2 cells using SMN1 mouse mAb (green) and negative control (purple).



Immunohistochemical

Immunohistochemical analysis of paraffin-embedded human testis tissues (left) and lung cancer tissues (right) using SMN1 mouse mAb with DAB staining.



Western blot

Western blot analysis  
using SMN1 mouse  
mAb against HepG2 (1),  
Hela (2), K562 (3), Jurkat  
(4), SKBR-3 (5), A431 (6)  
and Cos7 (7) cell lysate.