

Anti-MAPK14/p38 Antibody (R3U34)

Summary

Catalog No.	RHH28306
Clone ID	R3U34
Host species	Mouse
Tested applications	IHC: 1:50-1:100
Species reactivity	Human, Mouse, Rat
Form	Liquid
Storage buffer	0.01M PBS, pH 7.4, 0.5% BSA, 0.05% Sodium Azide and 50% Glycerol.
Concentration	1 mg/ml
Purity	>95% as determined by SDS-PAGE.
Clonality	Monoclonal
Isotype	IgG1
Applications	IHC
Target	Stress-activated protein kinase 2a, Mitogen-activated protein kinase 14, Mitogen-activated protein kinase p38 alpha, SAPK2A, Cytokine suppressive anti-inflammatory drug-binding protein, CSBP, CSPB1, MAP kinase 14, MAP kinase MXI2, MAPK14, CSBP2, MAP kinase p38 alpha, MAPK 14, MXI2, CSAID-binding protein, MAX-interacting protein 2, CSBP1, SAPK2a
Purification	Protein A/G purified from cell culture supernatant.
Endotoxin level	Please contact with the lab for this information.
Accession	Q16539

Stability and Storage

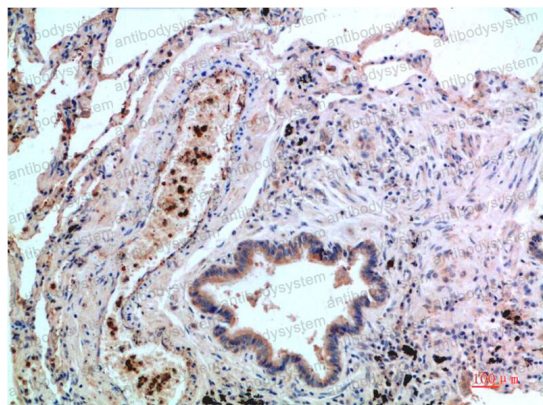
Use a manual defrost freezer and avoid repeated freeze-thaw cycles.

Store at 4°C short term (1-2 weeks). Store at -20°C 12 months. Store at -80°C long term.

Note

For research use only.

Data Image



Immunohistochemical

Immunohistochemistry analysis of paraffin-embedded Human Lung Carcinoma Tissue using p38 antibody. High-pressure and temperature Sodium Citrate pH 6.0 was used for antigen retrieval.