

Anti-PKN2 Antibody (R3U30)

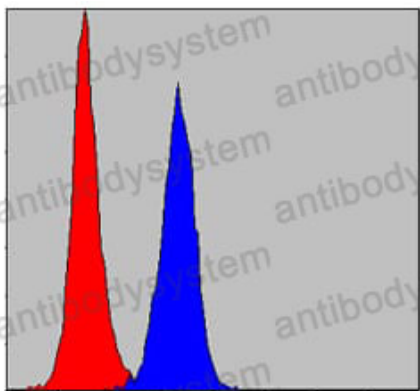
Summary

Catalog No.	RHH27001
Clone ID	R3U30
Host species	Mouse
Tested applications	ELISA: 1:10000, FCM: 1:200-1:400, IHC: 1:200-1:1000, WB: 1:500-1:2000
Species reactivity	Human, Mouse, Rat, Monkey
Form	Liquid
Storage buffer	0.01M PBS, pH 7.4, 0.05% Sodium Azide.
Concentration	1 mg/ml
Purity	>95% as determined by SDS-PAGE.
Clonality	Monoclonal
Isotype	IgG1
Applications	ELISA, FCM, IHC, WB
Target	PRK2, PKN gamma, PRKCL2, Protein kinase C-like 2, Serine/threonine-protein kinase N2, PKN2, Protein-kinase C-related kinase 2
Purification	Protein A/G purified from cell culture supernatant.
Endotoxin level	Please contact with the lab for this information.
Accession	Q16513
Stability and Storage	Use a manual defrost freezer and avoid repeated freeze-thaw cycles. Store at 4°C short term (1-2 weeks). Store at -20°C 12 months. Store at -80°C long term.

Note

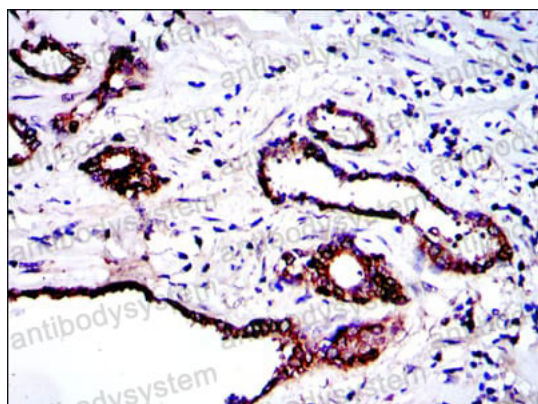
For research use only.

Data Image



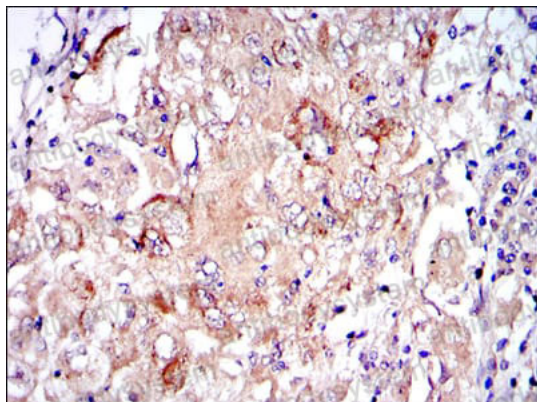
Flow Cytometry

Flow cytometric analysis of NIH/3T3 cells using PRK2 mouse mAb (blue) and negative control (red).



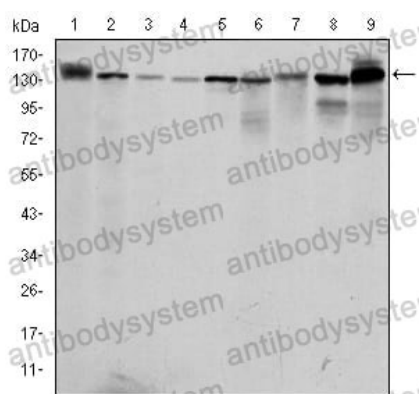
Immunohistochemical

Immunohistochemical analysis of paraffin-embedded human prostate tissues using PRK2 mouse mAb with DAB staining.



Immunohistochemical

Immunohistochemical analysis of paraffin-embedded human lung cancer tissues using PRK2 mouse mAb with DAB staining.



Western blot

Western blot analysis using PRK2 mouse mAb against PC-12 (1), Cos7 (2), K562 (3), Jurkat (4), Hela (5), A431 (6), C6 (7), NIH/3T3 (8) and HEK293 (9) cell lysate.