

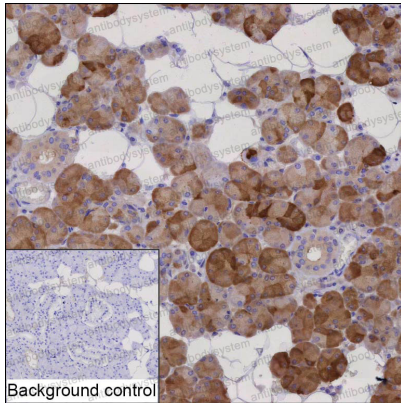
Anti-PRR4 Antibody (R3U28)

Summary

Catalog No.	RHH26101
Clone ID	R3U28
Host species	Mouse
Tested applications	IHC: 1:50-1:250
Species reactivity	Human
Form	Liquid
Storage buffer	0.01M PBS, pH 7.4, 0.05% Sodium Azide.
Concentration	1 mg/ml
Purity	>95% as determined by SDS-PAGE.
Clonality	Monoclonal
Isotype	IgG1
Applications	IHC
Target	PROL4, Lacrimal proline-rich protein, PRR4, LPRP, Nasopharyngeal carcinoma-associated proline-rich protein 4, Proline-rich protein 4
Purification	Protein A/G purified from cell culture supernatant.
Endotoxin level	Please contact with the lab for this information.
Accession	Q16378
Stability and Storage	Use a manual defrost freezer and avoid repeated freeze-thaw cycles. Store at 4°C short term (1-2 weeks). Store at -20°C 12 months. Store at -80°C long term.

Note For research use only.

Data Image



IHC-P analysis of salivary gland tissue by PRR4 antibody (RHH26101). IHC-P was performed using sections of the formalin-fixed paraffin-embedded salivary gland tissue; Result: Glandular cells are positively stained at the cytoplasm.

Immunohistochemical