

Anti-NFE2L2 Antibody (R3U23)

Summary

Catalog No.	RHH25002
Clone ID	R3U23
Host species	Mouse
Tested applications	ELISA: 1:10000, IHC: 1:200-1:1000
Species reactivity	Human
Form	Liquid
Storage buffer	0.01M PBS, pH 7.4, 0.05% Sodium Azide.
Concentration	1 mg/ml
Purity	>95% as determined by SDS-PAGE.
Clonality	Monoclonal
Isotype	IgG1
Applications	ELISA, IHC
Target	NFE2-related factor 2, Nuclear factor, erythroid derived 2, like 2, NRF2, Nuclear factor erythroid 2-related factor 2, NFE2L2, Nrf-2, HEBP1, NF-E2- related factor 2
Purification	Protein A/G purified from cell culture supernatant.
Endotoxin level	Please contact with the lab for this information.
Accession	Q16236

Stability and Storage

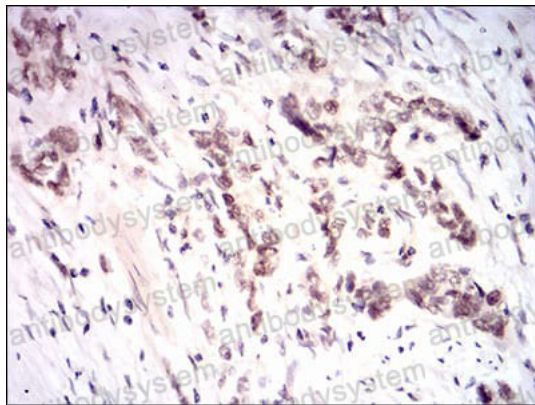
Use a manual defrost freezer and avoid repeated freeze-thaw cycles.

Store at 4°C short term (1-2 weeks). Store at -20°C 12 months. Store at -80°C long term.

Note

For research use only.

Data Image



Immunohistochemical analysis of paraffin-embedded human stomach cancer tissues using NFE2L2 mouse mAb with DAB staining.

Immunohistochemical