

Anti-ATP6AP1 Antibody (R3U18)

Summary

Catalog No.	RHH22602
Clone ID	R3U18
Host species	Mouse
Tested applications	ELISA: 1:10000, FCM: 1:200-1:400, WB: 1:500-1:2000
Species reactivity	Human, Mouse
Form	Liquid
Storage buffer	0.01M PBS, pH 7.4, 0.05% Sodium Azide.
Concentration	1 mg/ml
Purity	>95% as determined by SDS-PAGE.
Clonality	Monoclonal
Isotype	IgG1
Applications	ELISA, FCM, WB
Target	Vacuolar proton pump subunit S1, ATP6S1, XAP3, ATP6AP1, ATP6IP1, V-ATPase Ac45 subunit, V-ATPase S1 accessory protein, Protein XAP-3, V-type proton ATPase subunit S1, VATPS1, V-ATPase subunit S1
Purification	Protein A/G purified from cell culture supernatant.
Endotoxin level	Please contact with the lab for this information.
Accession	Q15904

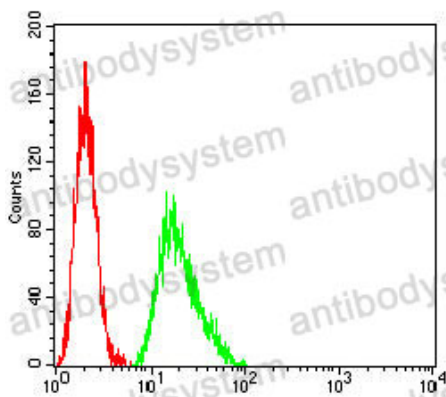
Stability and Storage

Use a manual defrost freezer and avoid repeated freeze-thaw cycles.

Store at 4°C short term (1-2 weeks). Store at -20°C 12 months. Store at -80°C long term.

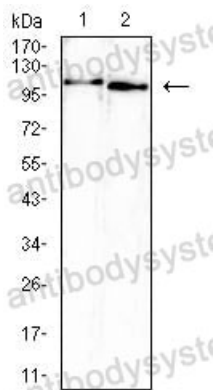
Note

For research use only.

Data Image

Flow Cytometry

Flow cytometric analysis of HeLa cells using ATP6AP1 mouse mAb (green) and negative control (red).



Western blot

Western blot analysis using ATP6AP1 mouse mAb against PC-3 (1), and Raw264.7 (2) cell lysate.