

# Anti-ATP6AP1 Antibody (R3U17)

## Summary

---

<b>Catalog No.</b>	RHH22601
<b>Clone ID</b>	R3U17
<b>Host species</b>	Mouse
<b>Tested applications</b>	ELISA: 1:10000, FCM: 1:200-1:400, WB: 1:500-1:2000
<b>Species reactivity</b>	Human
<b>Form</b>	Liquid
<b>Storage buffer</b>	0.01M PBS, pH 7.4, 0.05% Sodium Azide.
<b>Concentration</b>	1 mg/ml
<b>Purity</b>	>95% as determined by SDS-PAGE.
<b>Clonality</b>	Monoclonal
<b>Isotype</b>	IgG1
<b>Applications</b>	ELISA, FCM, WB
<b>Target</b>	Vacuolar proton pump subunit S1, ATP6S1, XAP3, ATP6AP1, ATP6IP1, V-ATPase Ac45 subunit, V-ATPase S1 accessory protein, Protein XAP-3, V-type proton ATPase subunit S1, VATPS1, V-ATPase subunit S1
<b>Purification</b>	Protein A/G purified from cell culture supernatant.
<b>Endotoxin level</b>	Please contact with the lab for this information.
<b>Accession</b>	Q15904

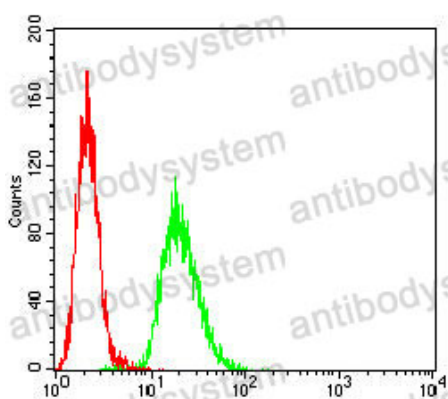
**Stability and Storage**

Use a manual defrost freezer and avoid repeated freeze-thaw cycles.

Store at 4°C short term (1-2 weeks). Store at -20°C 12 months. Store at -80°C long term.

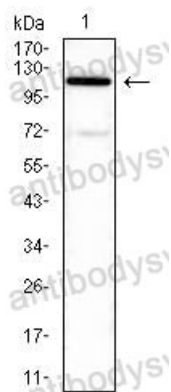
**Note**

For research use only.

**Data Image**

Flow Cytometry

Flow cytometric analysis of HeLa cells using ATP6AP1 mouse mAb (green) and negative control (red).



Western blot

Western blot analysis using ATP6AP1 mouse mAb against PC-3 (1) cell lysate.