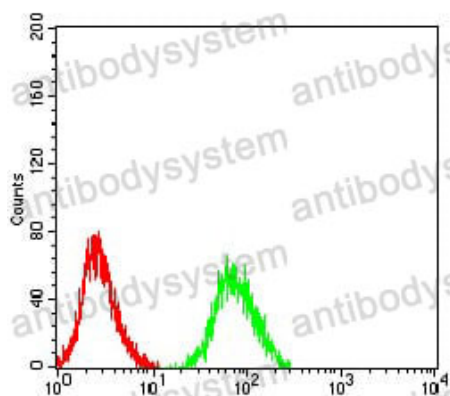


Anti-CHRNA6 Antibody (R3U11)

Summary

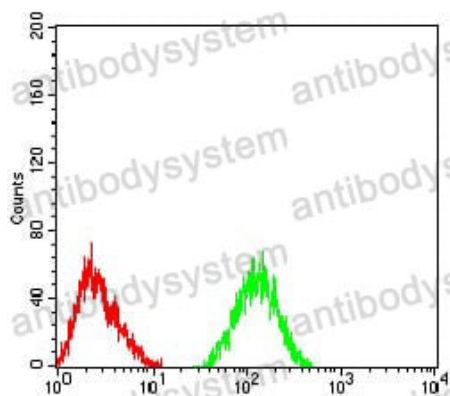
Catalog No.	RHH20901
Clone ID	R3U11
Host species	Mouse
Tested applications	ELISA: 1:10000, FCM: 1:200-1:400, IF: 1:100-1:500, IHC: 1:200-1:1000
Species reactivity	Human
Form	Liquid
Storage buffer	0.01M PBS, pH 7.4, 0.05% Sodium Azide.
Concentration	1 mg/ml
Purity	>95% as determined by SDS-PAGE.
Clonality	Monoclonal
Isotype	IgG1
Applications	ELISA, FCM, IF, IHC
Target	CHRNA6, Neuronal acetylcholine receptor subunit alpha-6
Purification	Protein A/G purified from cell culture supernatant.
Endotoxin level	Please contact with the lab for this information.
Accession	Q15825
Stability and Storage	Use a manual defrost freezer and avoid repeated freeze-thaw cycles. Store at 4°C short term (1-2 weeks). Store at -20°C 12 months. Store at -80°C long term.
Note	For research use only.

Data Image



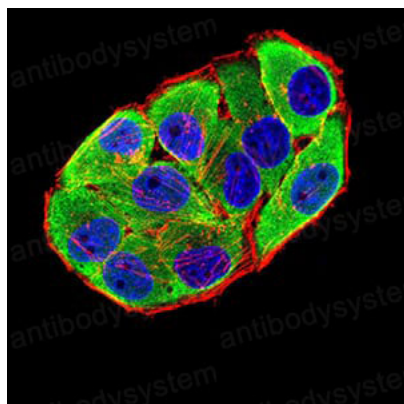
Flow Cytometry

Flow cytometric analysis of SH-SY5Y cells using CHRNA6 mouse mAb (green) and negative control (red).



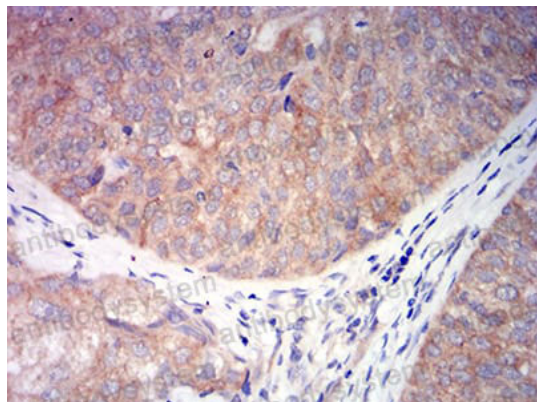
Flow Cytometry

Flow cytometric analysis of SK-N-SH cells using CHRNA6 mouse mAb (green) and negative control (red).



Immunofluorescence

Immunofluorescence analysis of Hela cells using CHRNA6 mouse mAb (green). Blue: DRAQ5 fluorescent DNA dye. Red: Actin filaments have been labeled with Alexa Fluor- 555 phalloidin.



Immunohistochemical

Immunohistochemical analysis of paraffin-embedded human bladder cancer tissues using CHRNA6 mouse mAb with DAB staining.