

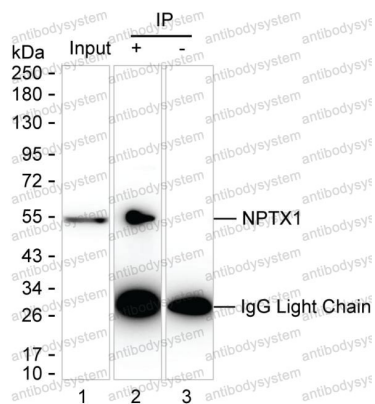
# Anti-NPTX1 Antibody (R3U08)

## Summary

---

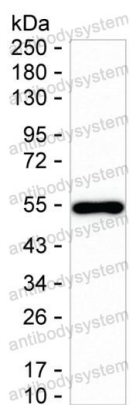
<b>Catalog No.</b>	RHH20601
<b>Clone ID</b>	R3U08
<b>Host species</b>	Mouse
<b>Tested applications</b>	IP: 1:100-1:200, WB: 1:500-1:1000
<b>Species reactivity</b>	Human, Rat
<b>Form</b>	Liquid
<b>Storage buffer</b>	0.01M PBS, pH 7.4, 0.05% Sodium Azide.
<b>Concentration</b>	1 mg/ml
<b>Purity</b>	>95% as determined by SDS-PAGE.
<b>Clonality</b>	Monoclonal
<b>Isotype</b>	IgG1
<b>Applications</b>	IP, WB
<b>Target</b>	NPTX1, NP1, Neuronal pentraxin I, Neuronal pentraxin-1, NP-I
<b>Purification</b>	Protein A/G purified from cell culture supernatant.
<b>Endotoxin level</b>	Please contact with the lab for this information.
<b>Accession</b>	Q15818
<b>Stability and Storage</b>	Use a manual defrost freezer and avoid repeated freeze-thaw cycles. Store at 4°C short term (1-2 weeks). Store at -20°C 12 months. Store at -80°C long term.
<b>Note</b>	For research use only.

## Data Image



Immunoprecipitation

Lane 1: Rat brain tissue lysate ; Lane 2: NPTX1 immunoprecipitated from rat brain tissue lysate by RHH20601; Lane 3: The same as Lane 2 but use IgG isotype control antibody ;Result: RHH20601 can immunoprecipitate NPTX1;



Western blot

Western blot analysis using NPTX1 mouse mAb against rat brain