

Anti-SMAD1 Antibody (R3U06)

Summary

Catalog No.	RHH20104
Clone ID	R3U06
Host species	Mouse
Tested applications	ELISA: 1:10000, WB: 1:500-1:2000
Species reactivity	Human, Mouse, Rat
Form	Liquid
Storage buffer	0.01M PBS, pH 7.4, 0.05% Sodium Azide.
Concentration	1 mg/ml
Purity	>95% as determined by SDS-PAGE.
Clonality	Monoclonal
Isotype	IgG1
Applications	ELISA, WB
Target	BSP1, Mothers against DPP homolog 1, Mothers against decapentaplegic homolog 1, SMAD1, Transforming growth factor-beta-signaling protein 1, MADH1, JV4-1, MADR1, SMAD family member 1, hSMAD1, SMAD 1, MAD homolog 1, Mad-related protein 1, BSP-1, Smad1
Purification	Protein A/G purified from cell culture supernatant.
Endotoxin level	Please contact with the lab for this information.
Accession	Q15797

Recombinant Proteins & Antibodies

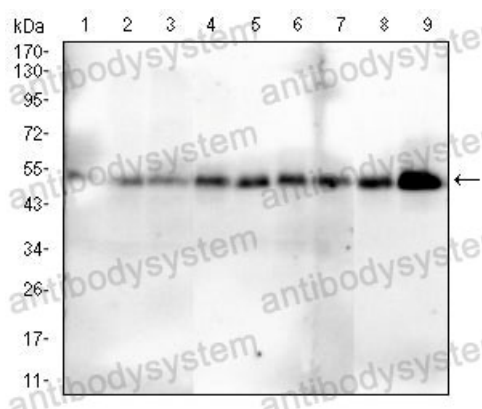
Stability and Storage

Use a manual defrost freezer and avoid repeated freeze-thaw cycles.

Store at 4°C short term (1-2 weeks). Store at -20°C 12 months. Store at -80°C long term.

Note

For research use only.

Data Image

Western blot

Western blot analysis using SMAD1 mouse mAb against HeLa (1), HepG2 (2), MCF-7 (3), C2C12 (4), A431 (5), A549 (6), LNCap (7), NIH/3T3 (8) and PC-12 (9) cell lysate.