

# Anti-SMAD1 Antibody (R3U05)

## Summary

---

<b>Catalog No.</b>	RHH20102
<b>Clone ID</b>	R3U05
<b>Host species</b>	Mouse
<b>Tested applications</b>	ELISA: 1:10000, WB: 1:500-1:2000
<b>Species reactivity</b>	Human, Monkey
<b>Form</b>	Liquid
<b>Storage buffer</b>	0.01M PBS, pH 7.4, 0.05% Sodium Azide.
<b>Concentration</b>	1 mg/ml
<b>Purity</b>	>95% as determined by SDS-PAGE.
<b>Clonality</b>	Monoclonal
<b>Isotype</b>	IgG1
<b>Applications</b>	ELISA, WB
<b>Target</b>	BSP1, Mothers against DPP homolog 1, Mothers against decapentaplegic homolog 1, SMAD1, Transforming growth factor-beta-signaling protein 1, MADH1, JV4-1, MADR1, SMAD family member 1, hSMAD1, SMAD 1, MAD homolog 1, Mad-related protein 1, BSP-1, Smad1
<b>Purification</b>	Protein A/G purified from cell culture supernatant.
<b>Endotoxin level</b>	Please contact with the lab for this information.
<b>Accession</b>	Q15797

**Stability and Storage**

Use a manual defrost freezer and avoid repeated freeze-thaw cycles.

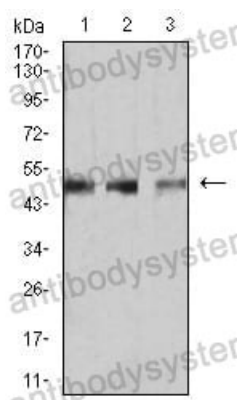
Store at 4°C short term (1-2 weeks). Store at -20°C 12 months. Store at -80°C long term.

**Note**

For research use only.

## Data Image

---



Western blot

Western blot analysis using SMAD1 mouse mAb against COS7 (1), HUVEC (2), and C2C12 (3) cell lysate.