

Anti-MYLK Antibody (R3T99)

Summary

| | |
|----------------------------|--|
| Catalog No. | RHH18202 |
| Clone ID | R3T99 |
| Host species | Mouse |
| Tested applications | ELISA: 1:10000, FCM: 1:200-1:400, IF: 1:200-1:1000, IHC: 1:200-1:1000, WB: 1:500-1:2000 |
| Species reactivity | Human, Mouse |
| Form | Liquid |
| Storage buffer | 0.01M PBS, pH 7.4, 0.05% Sodium Azide. |
| Concentration | 1 mg/ml |
| Purity | >95% as determined by SDS-PAGE. |
| Clonality | Monoclonal |
| Isotype | IgG1 |
| Applications | ELISA, FCM, IF, IHC, WB |
| Target | MLCK1, smMLCK, MYLK1, KRP, Kinase-related protein, MLCK, MYLK, Myosin light chain kinase, smooth muscle, Telokin |
| Purification | Protein A/G purified from cell culture supernatant. |
| Endotoxin level | Please contact with the lab for this information. |
| Accession | Q15746 |

Stability and Storage

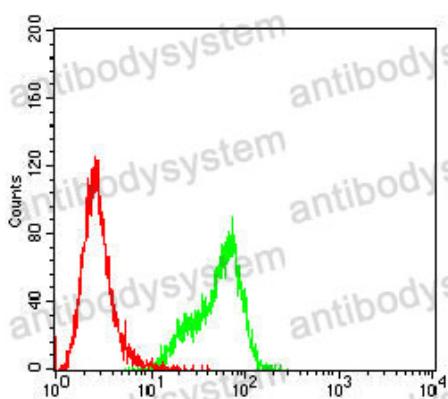
Use a manual defrost freezer and avoid repeated freeze-thaw cycles.

Store at 4°C short term (1-2 weeks). Store at -20°C 12 months. Store at -80°C long term.

Note

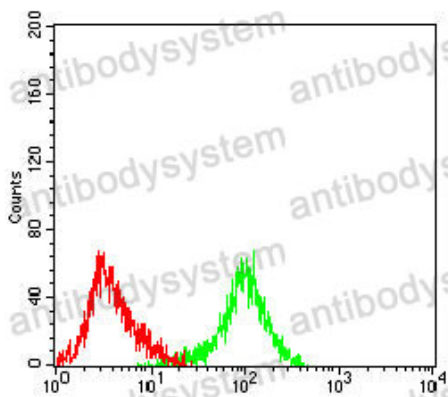
For research use only.

Data Image



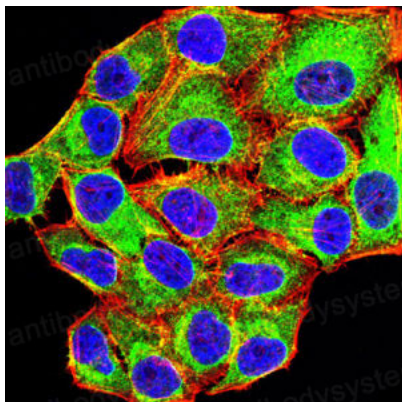
Flow Cytometry

Flow cytometric analysis of hela cells using MYLK mouse mAb (green) and negative control (red).



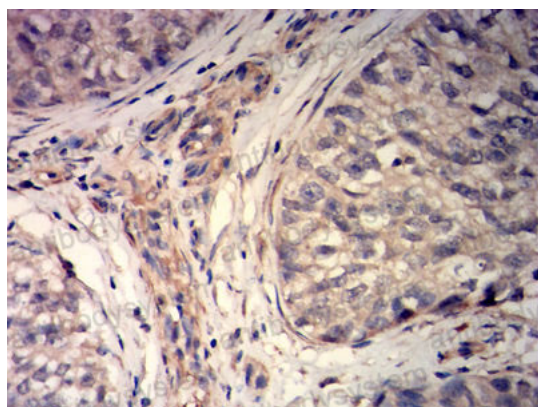
Flow Cytometry

Flow cytometric analysis of LNCAP cells using MYLK mouse mAb (green) and negative control (red).



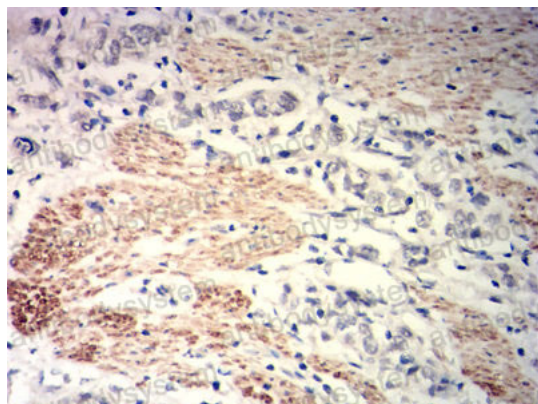
Immunofluorescence

Immunofluorescence analysis of HeLa cells using MYLK mouse mAb (green). Blue: DRAQ5 fluorescent DNA dye. Red: Actin filaments have been labeled with Alexa Fluor- 555 phalloidin.



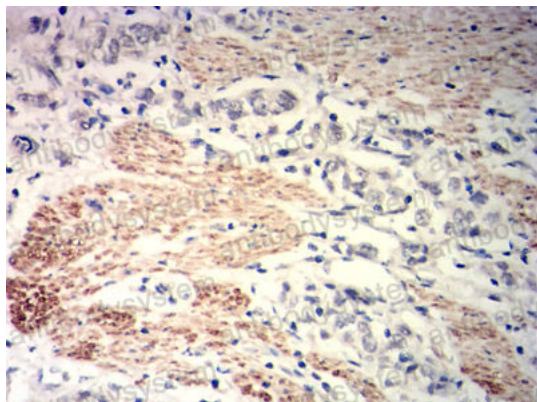
Immunohistochemical

Immunohistochemical analysis of paraffin-embedded human bladder Cancer tissues using MYLK mouse mAb with DAB staining.



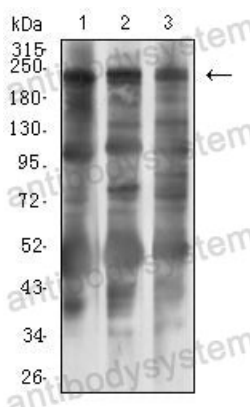
Immunohistochemical

Immunohistochemical analysis of paraffin-embedded human gastric cancer tissues using MYLK mouse mAb with DAB staining.



Immunohistochemical

Immunohistochemical analysis of paraffin-embedded human gastric cancer tissues using MYLK mouse mAb with DAB staining.



Western blot

Western blot analysis using MYLK mouse mAb against PC-3 (1), C2C12 (2), and Hela (3) cell lysate.