

Anti-TWIST1 Antibody (R3T93)

Summary

Catalog No.	RHH16301
Clone ID	R3T93
Host species	Mouse
Tested applications	ELISA: 1:10000, FCM: 1:200-1:400, IF: 1:50-1:500, IHC: 1:100-1:500, WB: 1:500-1:2000
Species reactivity	Human, Mouse, Rat, Rabbit
Form	Liquid
Storage buffer	0.01M PBS, pH 7.4, 0.05% Sodium Azide.
Concentration	1 mg/ml
Purity	>95% as determined by SDS-PAGE.
Clonality	Monoclonal
Isotype	IgG1
Applications	ELISA, FCM, IF, IHC, WB
Target	TWIST1, TWIST, H-twist, bHLHa38, Twist-related protein 1, Class A basic helix-loop-helix protein 38, BHLHA38
Purification	Protein A/G purified from cell culture supernatant.
Endotoxin level	Please contact with the lab for this information.
Accession	Q15672

Stability and Storage

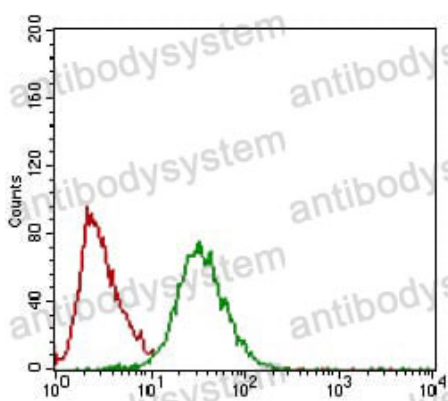
Use a manual defrost freezer and avoid repeated freeze-thaw cycles.

Store at 4°C short term (1-2 weeks). Store at -20°C 12 months. Store at -80°C long term.

Note

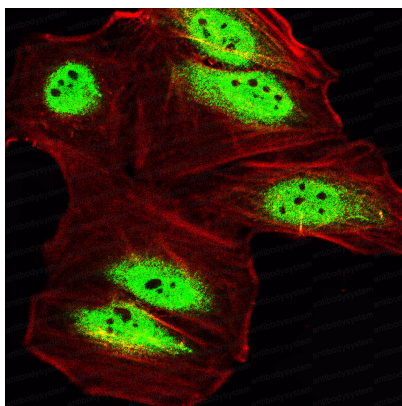
For research use only.

Data Image



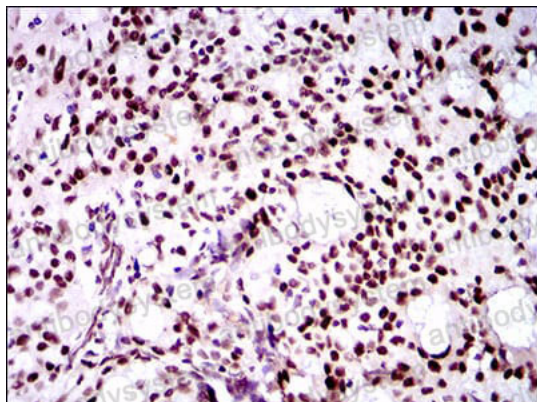
Flow Cytometry

Flow cytometric analysis of Hela cells using TWIST1 mouse mAb (green) and negative control (red).



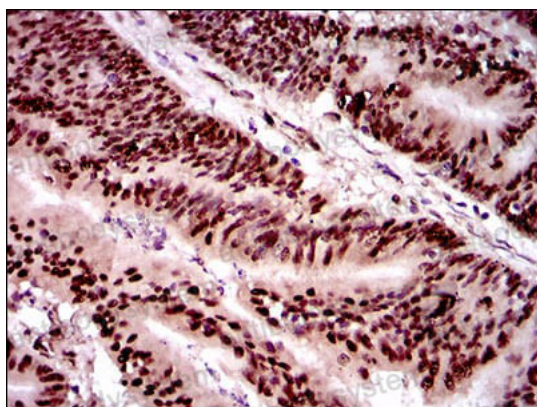
Immunofluorescence

Immunofluorescence analysis of Hela cells using TWIST1 mouse mAb (green). Blue: DRAQ5 fluorescent DNA dye.



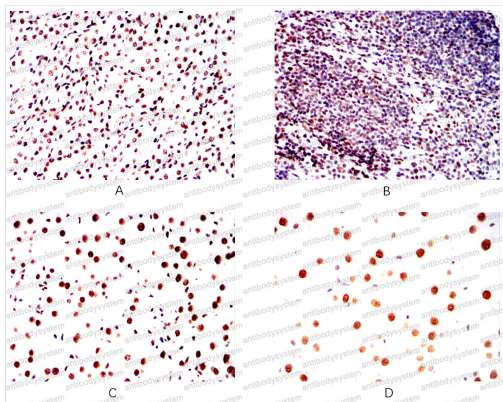
Immunohistochemical

Immunohistochemical analysis of paraffin-embedded human cervical cancer tissues using TWIST1 mouse mAb with DAB staining.



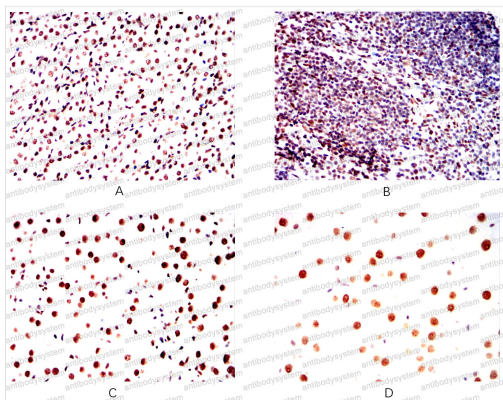
Immunohistochemical

Immunohistochemical analysis of paraffin-embedded human colon cancer tissues using TWIST1 mouse mAb with DAB staining.



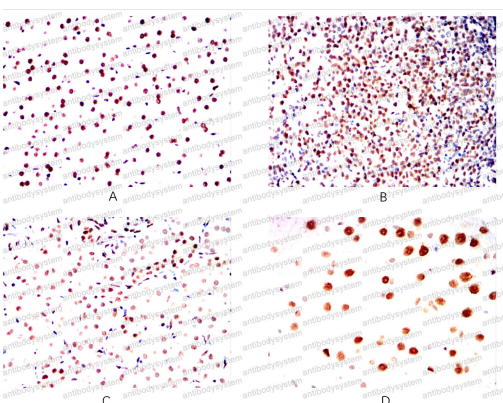
Immunohistochemical

Immunohistochemical analysis of paraffin-embedded Mouse kidney(A) Mouse spleen(B) Mouse liver(C) Mouse brain(D) using TWIST1 mouse mAb with DAB staining.



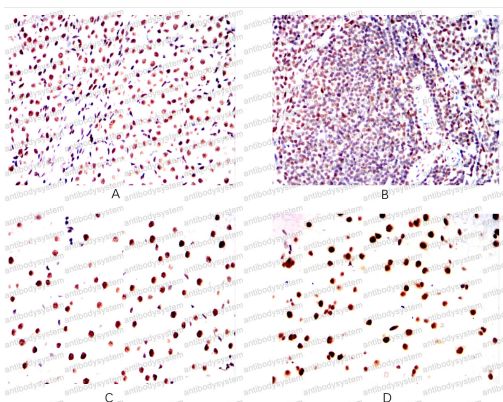
Immunohistochemical

Immunohistochemical analysis of paraffin-embedded Mouse kidney(A)Mouse spleen(B)Mouse liver(C)Mouse brain(D) using TWIST1 mouse mAb with DAB staining.



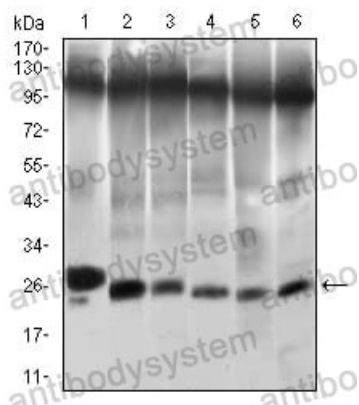
Immunohistochemical

Immunohistochemical analysis of paraffin-embedded Rat kidney(A)Rat spleen(B)Rat liver(C)Rat brain(D) using TWIST1 mouse mAb with DAB staining.



Immunohistochemical

Immunohistochemical analysis of paraffin-embedded Rabbit kidney(A)Rabbit spleen(B)Rabbit liver(C)Rabbit brain(D) using TWIST1 mouse mAb with DAB staining.



Western blot

Western blot analysis using TWIST1 mouse mAb against NIH/3T3 (1), JURKAT (2), HELA (3), A549 (4), RAJI (5) and OCM-1 (6) cell lysate.