

# Anti-TRIP6 Antibody (R3T90)

## Summary

---

<b>Catalog No.</b>	RHH16001
<b>Clone ID</b>	R3T90
<b>Host species</b>	Mouse
<b>Tested applications</b>	ELISA: 1:10000, FCM: 1:200-1:400, WB: 1:500-1:2000
<b>Species reactivity</b>	Human
<b>Form</b>	Liquid
<b>Storage buffer</b>	0.01M PBS, pH 7.4, 0.05% Sodium Azide.
<b>Concentration</b>	1 mg/ml
<b>Purity</b>	>95% as determined by SDS-PAGE.
<b>Clonality</b>	Monoclonal
<b>Isotype</b>	IgG1
<b>Applications</b>	ELISA, FCM, WB
<b>Target</b>	Zyxin-related protein 1, Opa-interacting protein 1, Thyroid receptor-interacting protein 6, OIP1, TRIP-6, TR-interacting protein 6, OIP-1, TRIP6, ZRP-1
<b>Purification</b>	Protein A/G purified from cell culture supernatant.
<b>Endotoxin level</b>	Please contact with the lab for this information.
<b>Accession</b>	Q15654

**Stability and Storage**

Use a manual defrost freezer and avoid repeated freeze-thaw cycles.

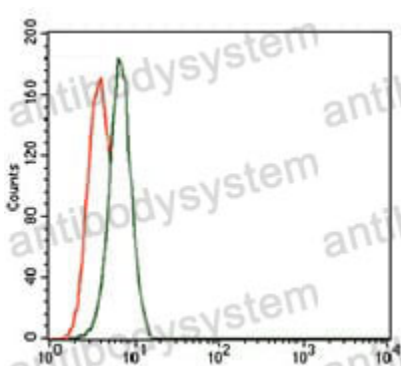
Store at 4°C short term (1-2 weeks). Store at -20°C 12 months. Store at -80°C long term.

**Note**

For research use only.

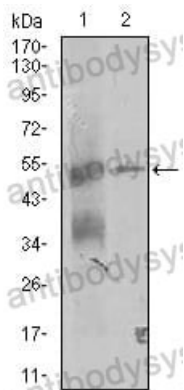
**Data Image**

---



Flow Cytometry

Flow cytometric analysis of K562 cells using TRIP6 mouse mAb (green) and negative control (red).



Western blot

Western blot analysis using TRIP6 mouse mAb against K562 and A431 (2) cell lysate.