

# Anti-SPA17 Antibody (R3T82)

## Summary

---

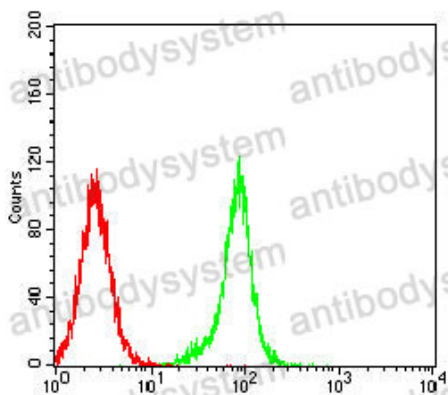
|                              |   |
|------------------------------|---|
| <b>Catalog No.</b>           | RHH11502  |
| <b>Clone ID</b>              | R3T82   |
| <b>Host species</b>          | Mouse   |
| <b>Tested applications</b>   | ELISA: 1:10000, FCM: 1:200-1:400, IHC: 1:200-1:1000   |
| <b>Species reactivity</b>    | Human   |
| <b>Form</b>                  | Liquid  |
| <b>Storage buffer</b>        | 0.01M PBS, pH 7.4, 0.05% Sodium Azide.  |
| <b>Concentration</b>         | 1 mg/ml   |
| <b>Purity</b>                | >95% as determined by SDS-PAGE.   |
| <b>Clonality</b>             | Monoclonal  |
| <b>Isotype</b>               | IgG1  |
| <b>Applications</b>          | ELISA, FCM, IHC   |
| <b>Target</b>                | CT22, SPA17, Sp17-1, SP17, Cancer/testis antigen 22, Sperm surface protein Sp17, Sperm autoantigenic protein 17, Sperm protein 17                               |
| <b>Purification</b>          | Protein A/G purified from cell culture supernatant.   |
| <b>Endotoxin level</b>       | Please contact with the lab for this information.   |
| <b>Accession</b>             | Q15506  |
| <b>Stability and Storage</b> | Use a manual defrost freezer and avoid repeated freeze-thaw cycles.<br>Store at 4°C short term (1-2 weeks). Store at -20°C 12 months. Store at -80°C long term. |

Note

For research use only.

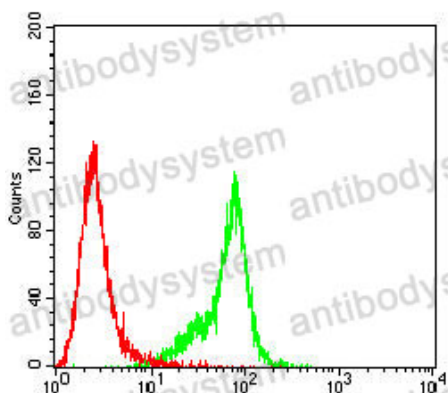
## Data Image

---



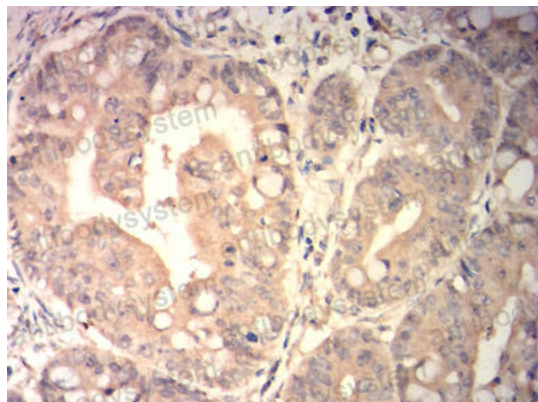
Flow Cytometry

Flow cytometric analysis of SK-OV-3 cells using SP17 mouse mAb (green) and negative control (red).



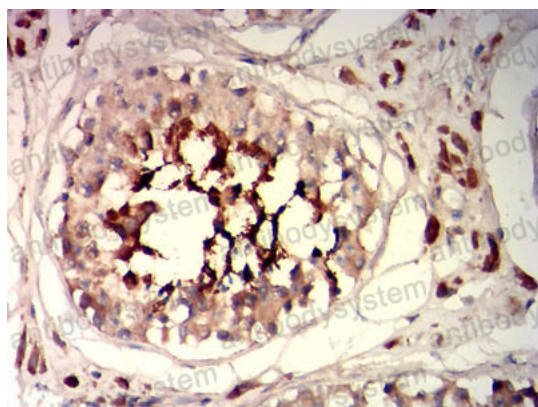
Flow Cytometry

Flow cytometric analysis of Hela cells using SP17 mouse mAb (green) and negative control (red).



Immunohistochemical

Immunohistochemical analysis of paraffin-embedded human rectal cancer tissues using SP17 mouse mAb with DAB staining.



Immunohistochemical

Immunohistochemical analysis of paraffin-embedded human testis tissues using SP17 mouse mAb with DAB staining.