

Anti-SKIV2L Antibody (R3T80)

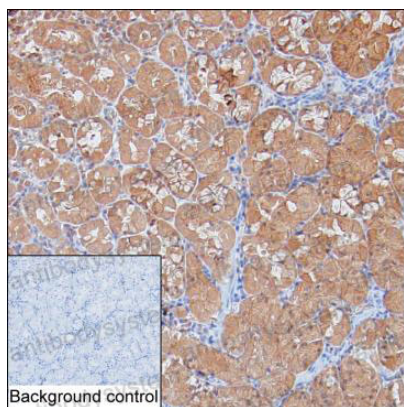
Summary

Catalog No.	RHH11103
Clone ID	R3T80
Host species	Mouse
Tested applications	IHC: 1:100-1:200
Species reactivity	Human
Form	Liquid
Storage buffer	0.01M PBS, pH 7.4, 0.05% Sodium Azide.
Concentration	1 mg/ml
Purity	>95% as determined by SDS-PAGE.
Clonality	Monoclonal
Isotype	IgG1
Applications	IHC
Target	SKIV2L, Helicase SKI2W, W, Helicase-like protein, HLP, SKI2W, Ski2, SKIV2, DDX13
Purification	Protein A/G purified from cell culture supernatant.
Endotoxin level	Please contact with the lab for this information.
Accession	Q15477
Stability and Storage	Use a manual defrost freezer and avoid repeated freeze-thaw cycles. Store at 4°C short term (1-2 weeks). Store at -20°C 12 months. Store at -80°C long term.

Note

For research use only.

Data Image



Immunohistochemical

IHC-P analysis of stomach tissue by SKIC2 antibody (RHH11103). IHC-P was performed using sections of the formalin-fixed paraffin-embedded stomach tissue; Result: Glandular cells are positively stained at the cytoplasm.