

# Anti-SHH Antibody (R3T79)

## Summary

---

<b>Catalog No.</b>	RHH10702
<b>Clone ID</b>	R3T79
<b>Host species</b>	Mouse
<b>Tested applications</b>	ELISA: 1:10000, FCM: 1:200-1:400, IHC: 1:200-1:1000, WB: 1:500-1:2000
<b>Species reactivity</b>	Human, Mouse, Monkey
<b>Form</b>	Liquid
<b>Storage buffer</b>	0.01M PBS, pH 7.4, 0.05% Sodium Azide.
<b>Concentration</b>	1 mg/ml
<b>Purity</b>	>95% as determined by SDS-PAGE.
<b>Clonality</b>	Monoclonal
<b>Isotype</b>	IgG1
<b>Applications</b>	ELISA, FCM, IHC, WB
<b>Target</b>	ShhNC, Sonic hedgehog protein, Shh N-terminal processed signaling domains, SHH, Shh unprocessed N-terminal signaling and C-terminal autoprocessing domains, ShhN, ShhNp, HHG-1
<b>Purification</b>	Protein A/G purified from cell culture supernatant.
<b>Endotoxin level</b>	Please contact with the lab for this information.
<b>Accession</b>	Q15465

**Stability and Storage**

Use a manual defrost freezer and avoid repeated freeze-thaw cycles.

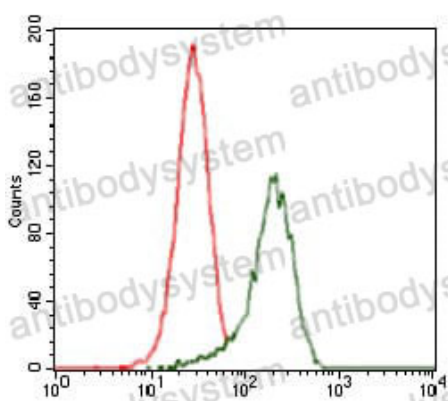
Store at 4°C short term (1-2 weeks). Store at -20°C 12 months. Store at -80°C long term.

**Note**

For research use only.

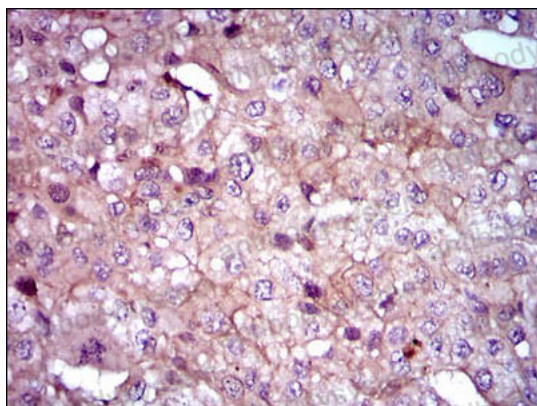
**Data Image**

---



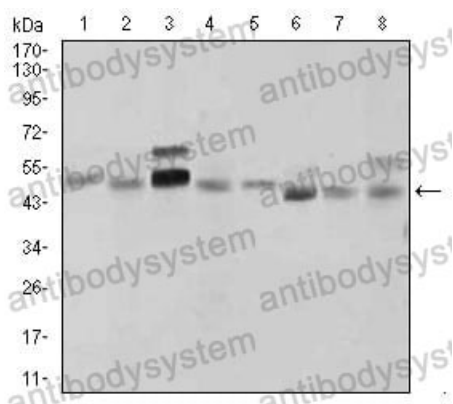
Flow Cytometry

Flow cytometric analysis of HeLa cells using SHH mouse mAb (green) and negative control (red).



Immunohistochemical

Immunohistochemical analysis of paraffin-embedded human liver cancer tissues using SHH mouse mAb with DAB staining.



Western blot

Western blot analysis using SHH mouse mAb against LNCaP (1), HepG2 (2), PANC-1 (3), HeLa (4), SK-N-SH (5), F9 (6), NIH3T3 (7), and COS7 (8) cell lysate.