

Anti-TOMM20 Antibody (R3T69)

Summary

Catalog No.	RHH08103
Clone ID	R3T69
Host species	Mouse
Tested applications	IHC: 1:100-1:200, IP: 1:100-1:200, WB: 1:500-1:1000
Species reactivity	Human, Mouse, Rat
Form	Liquid
Storage buffer	0.01M PBS, pH 7.4, 0.05% Sodium Azide.
Concentration	1 mg/ml
Purity	>95% as determined by SDS-PAGE.
Clonality	Monoclonal
Isotype	IgG1
Applications	IHC, IP, WB
Target	Mitochondrial 20 kDa outer membrane protein, Mitochondrial import receptor subunit TOM20 homolog, KIAA0016, TOMM20, Outer mitochondrial membrane receptor Tom20
Purification	Protein A/G purified from cell culture supernatant.
Endotoxin level	Please contact with the lab for this information.
Accession	Q15388

Stability and Storage

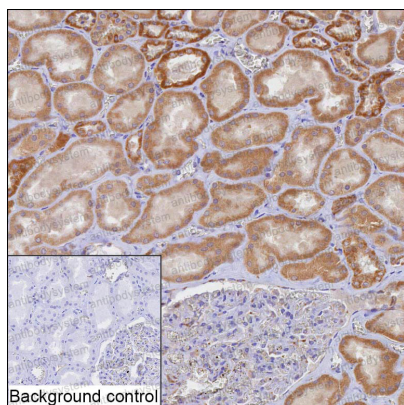
Use a manual defrost freezer and avoid repeated freeze-thaw cycles.

Store at 4°C short term (1-2 weeks). Store at -20°C 12 months. Store at -80°C long term.

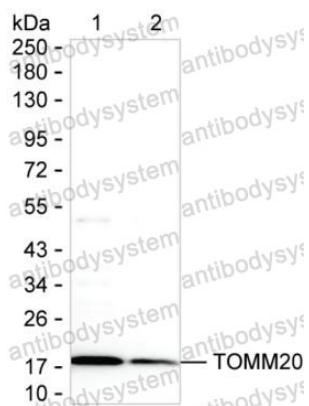
Note

For research use only.

Data Image



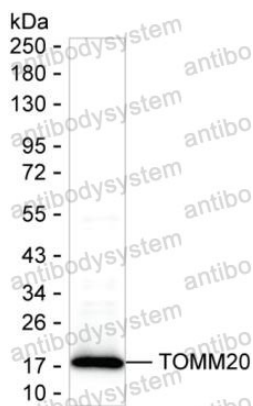
Immunohistochemical



Western blot

IHC-P analysis of kidney tissue by TOMM20 antibody (RHH08103). IHC-P was performed using sections of the formalin-fixed paraffin-embedded kidney tissue; Result: Cells in tubules are positively stained at the cytoplasm.

Western blot analysis using TOMM20 mouse mAb against mouse brain and rat brain



Western blot

Western blot analysis using TOMM20 mouse mAb
against HEK-293 lysate