

# Anti-EPHA7 Antibody (R3T68)

## Summary

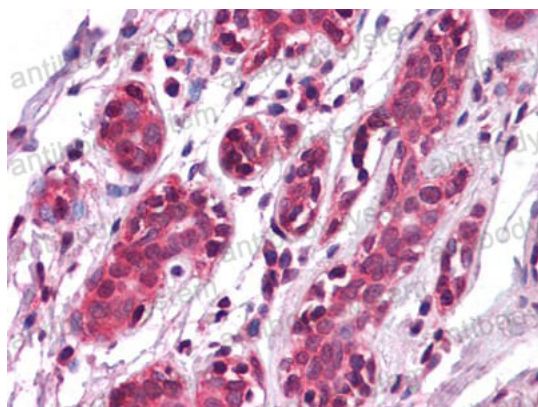
---

<b>Catalog No.</b>	RHH07802
<b>Clone ID</b>	R3T68
<b>Host species</b>	Mouse
<b>Tested applications</b>	IHC: 1:200-1:1000
<b>Species reactivity</b>	Human
<b>Form</b>	Liquid
<b>Storage buffer</b>	0.01M PBS, pH 7.4, 0.05% Sodium Azide.
<b>Concentration</b>	1 mg/ml
<b>Purity</b>	>95% as determined by SDS-PAGE.
<b>Clonality</b>	Monoclonal
<b>Isotype</b>	IgG2b
<b>Applications</b>	IHC
<b>Target</b>	EHK3, hEK11, Ephrin type-A receptor 7, HEK11, EHK-3, EPH homology kinase 3, EK11, EPHA7, EPH-like kinase 11
<b>Purification</b>	Protein A/G purified from cell culture supernatant.
<b>Endotoxin level</b>	Please contact with the lab for this information.
<b>Accession</b>	Q15375
<b>Stability and Storage</b>	Use a manual defrost freezer and avoid repeated freeze-thaw cycles. Store at 4°C short term (1-2 weeks). Store at -20°C 12 months. Store at -80°C long term.

**Note** For research use only.

## Data Image

---



Immunohistochemical

Immunohistochemical analysis of paraffin-embedded human Breast tissues using EPHA7 mouse mAb