

Anti-CD279/PDCD1/PD1 Antibody (R3T56)

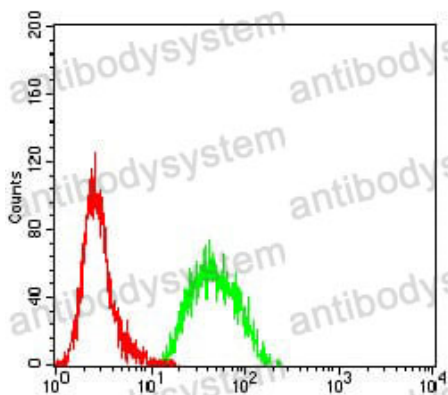
Summary

Catalog No.	RHH02204
Clone ID	R3T56
Host species	Mouse
Tested applications	ELISA: 1:10000, FCM: 1:200-1:400
Species reactivity	Human
Form	Liquid
Storage buffer	0.01M PBS, pH 7.4, 0.05% Sodium Azide.
Concentration	1 mg/ml
Purity	>95% as determined by SDS-PAGE.
Clonality	Monoclonal
Isotype	IgG1
Applications	ELISA, FCM
Target	Programmed cell death protein 1, Protein PD-1, hPD-1, PD1, PDCD1, CD279
Purification	Protein A/G purified from cell culture supernatant.
Endotoxin level	Please contact with the lab for this information.
Accession	Q15116
Stability and Storage	Use a manual defrost freezer and avoid repeated freeze-thaw cycles. Store at 4°C short term (1-2 weeks). Store at -20°C 12 months. Store at -80°C long term.

Note

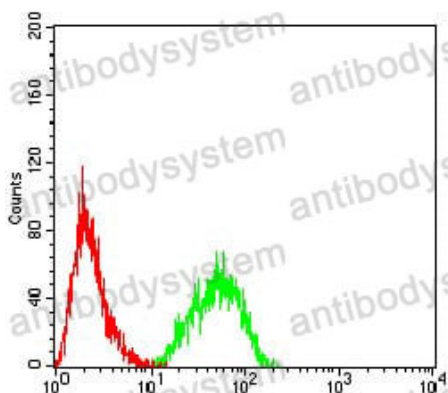
For research use only.

Data Image



Flow Cytometry

Flow cytometric analysis of Hela cells using PD1 mouse mAb (green) and negative control (red).



Flow Cytometry

Flow cytometric analysis of Hela cells using PD1 mouse mAb (green) and negative control (red).