

# Anti-CD279/PDCD1/PD1 Antibody (R3T55)

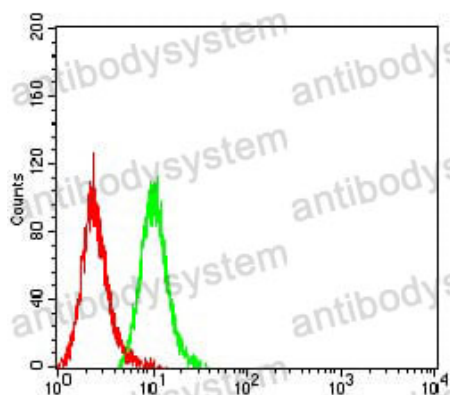
## Summary

---

<b>Catalog No.</b>	RHH02203
<b>Clone ID</b>	R3T55
<b>Host species</b>	Mouse
<b>Tested applications</b>	ELISA: 1:10000, FCM: 1:200-1:400, WB: 1:500-1:2000
<b>Species reactivity</b>	Human
<b>Form</b>	Liquid
<b>Storage buffer</b>	0.01M PBS, pH 7.4, 0.05% Sodium Azide.
<b>Concentration</b>	1 mg/ml
<b>Purity</b>	>95% as determined by SDS-PAGE.
<b>Clonality</b>	Monoclonal
<b>Isotype</b>	IgG1
<b>Applications</b>	ELISA, FCM, WB
<b>Target</b>	Programmed cell death protein 1, Protein PD-1, hPD-1, PD1, PDCD1, CD279
<b>Purification</b>	Protein A/G purified from cell culture supernatant.
<b>Endotoxin level</b>	Please contact with the lab for this information.
<b>Accession</b>	Q15116
<b>Stability and Storage</b>	Use a manual defrost freezer and avoid repeated freeze-thaw cycles. Store at 4°C short term (1-2 weeks). Store at -20°C 12 months. Store at -80°C long term.

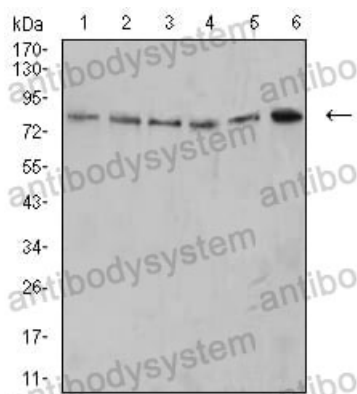
**Note**

For research use only.

**Data Image**

Flow Cytometry

Flow cytometric analysis of Hela cells using PD1 mouse mAb (green) and negative control (red).



Western blot

Western blot analysis using PD1 mouse mAb against MOLT4 (1), K562 (2), Ramos (3), HL-60 (4), THP-1 (5), and U937 (6) cell lysate.