

Anti-SETDB1 Antibody (R3T51)

Summary

Catalog No.	RHG99501
Clone ID	R3T51
Host species	Mouse
Tested applications	IF: 1:200-1:1000, WB: 1:500-1:2000
Species reactivity	Human, Mouse, Monkey
Form	Liquid
Storage buffer	0.01M PBS, pH 7.4, 0.05% Sodium Azide.
Concentration	1 mg/ml
Purity	>95% as determined by SDS-PAGE.
Clonality	Monoclonal
Isotype	IgG1
Applications	IF, WB
Target	H3-K9-HMTase 4, ESET, SETDB1, SET domain bifurcated 1, Histone H3-K9 methyltransferase 4, KMT1E, KIAA0067, Lysine N-methyltransferase 1E, ERG-associated protein with SET domain, Histone-lysine N-methyltransferase SETDB1
Purification	Protein A/G purified from cell culture supernatant.
Endotoxin level	Please contact with the lab for this information.
Accession	Q15047

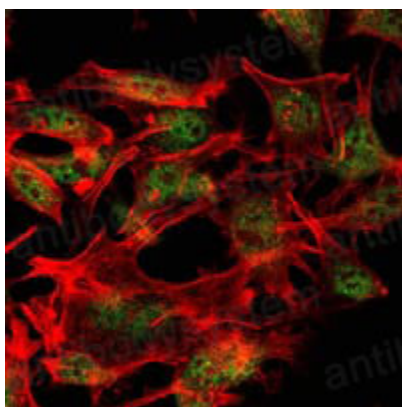
Stability and Storage

Use a manual defrost freezer and avoid repeated freeze-thaw cycles.

Store at 4°C short term (1-2 weeks). Store at -20°C 12 months. Store at -80°C long term.

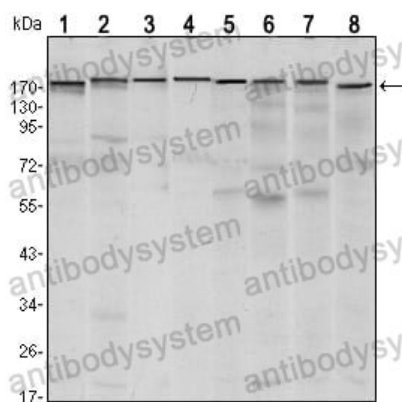
Note

For research use only.

Data Image

Immunofluorescence

Immunofluorescence analysis of LOVO cells using SETDB1 mouse mAb (green). Red: Actin filaments have been labeled with Alexa Fluor-555 phalloidin.



Western blot

Western blot analysis using SETDB1 mouse mAb against MCF-7 (1), T47D (2), HEK293 (3), JURKAT (4), NIH/3T3 (5), F9 (6), RAW246.7 (7) and Cos7 (8) cell lysate.